



ALBEMARLE COUNTY POLICE DEPARTMENT
2018 ANNUAL REPORT

COUNTY OF ALBEMARLE	TABLE OF CONTENTS
<u>Board of Supervisors</u>	
Rick Randolph	Chief’s Message.....4
<i>Scottsville District</i>	Mission, Values and Strategic Plan.....5
Diantha McKeel	Service Area and Population.....6
<i>Jack Jouett District</i>	Organizational Chart – Command.....7
Liz Palmer	Crime Statistics.....8
<i>Samuel Miller District</i>	Arrest Data.....9
Ned Galloway	Quality of Life Issues.....10
<i>Rio District</i>	Calls for Service.....11
Ann Mallek	Operations Bureau..... 12
<i>White Hall District</i>	Patrol..... 13
Norman Dill	Community Support Division..... 14
<i>Rivanna District</i>	Special Operations Division.....17
Jeff Richardson	Community Events.....21
<i>County Executive</i>	Support Services Bureau.....22
<u>Police Department</u>	Criminal Investigations Division.....23
Ron Lantz	Support Division.....27
<i>Chief of Police</i>	Auxiliary Police Program.....28
Major K.C. Carr	Awards and Recognition.....30
<i>Operations Bureau Deputy Chief</i>	Community Feedback.....31
Major Greg Jenkins	Albemarle County Police Foundation.....32-33
<i>Support Services Bureau Deputy Chief</i>	

CREDITS

Produced by: Jenny Zawitz (Crime Analyst) and Dana Reeves (Master Police Officer)

MESSAGE FROM THE CHIEF...



On behalf of the men and woman of the Albemarle County Police Department, I am pleased to share with you our 2018 Annual Report. This report provides an overview of the tremendous work and dedication displayed by our officers, civilians, and volunteers on a daily basis.

During 2018, the Albemarle County Police Department continued to focus its efforts in geo-policing while continuing the commitment to outreach in the community and enhancing relationships with our community partners and citizens. Officers and police staff participated in 439 community-based initiatives or events. Some of these events included Putt-Putt with the Police, ACPD Santa Patrol, Coffee with a Cop, Little Feet Meet, National Night Out, Guardians Gauntlet and many other special events.

Maintaining positive relationships with those we serve continues to be a critical focus for the Albemarle County Police Department. This year, officers received 120 commendations from our citizens, a 62% increase as compared to 2017. Integrity and professionalism are cornerstones of our profession, and these qualities are expected of all our officers. We continue to focus on enhancing our communication, understanding, and transparency with our community through geo-policing and other programs.

I am proud to be a part of the Albemarle County community and serve alongside the men and women of this Department. Investing in our community, our Department, and our people are hallmarks of our mission. As a public safety agency, we remain steadfast in our commitment to make Albemarle County a wonderful place to call home and a welcoming place for all.

*Sincerely,
Chief Ron L. Lantz
Albemarle County Police Department*

STRATEGIC PLAN

The Albemarle County Police Department's strategic plan addresses specific goals for the agency that are supported by objectives, initiatives, and performance measures.

In 2018, the agency continued efforts toward the following goals that were identified by the ACPD through 2019...

Goal 1: Strengthen Community Trust, Legitimacy, Accountability, and Transparency

Goal 2: Enhance Community Safety

Goal 3: Invest In Our People

As the department evolves, these goals may be amended to address the changing needs of the agency . These updates also ensure the goals rightly align with Albemarle County's overall strategic plan and focus on working as One Organization Committed to Excellence.

The mission of the Albemarle County Police Department is to provide for the safety and security of our many diverse citizens and communities while protecting individual rights and delivering quality services.

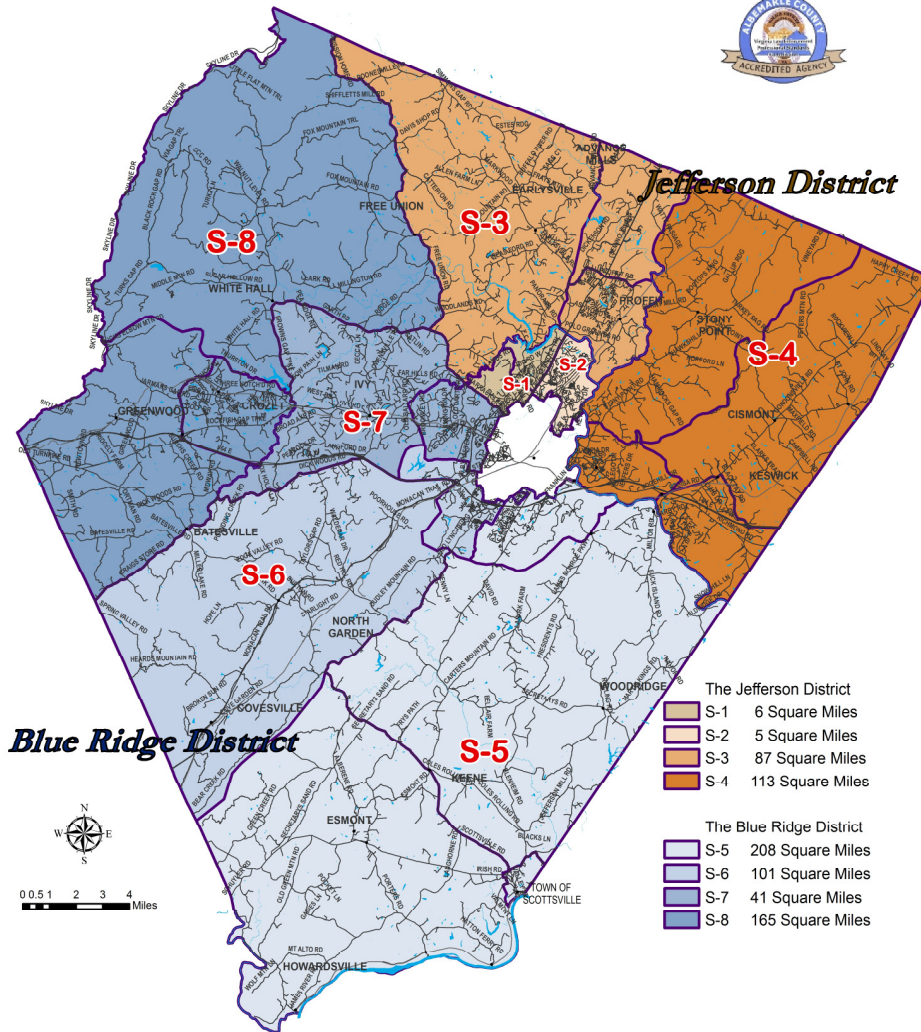
Core Values

- ◆ Integrity
- ◆ Professionalism
- ◆ Innovation
- ◆ Courage
- ◆ Diversity
- ◆ Unity
- ◆ Stewardship
- ◆ Preparedness
- ◆ Accountability
- ◆ Dedication



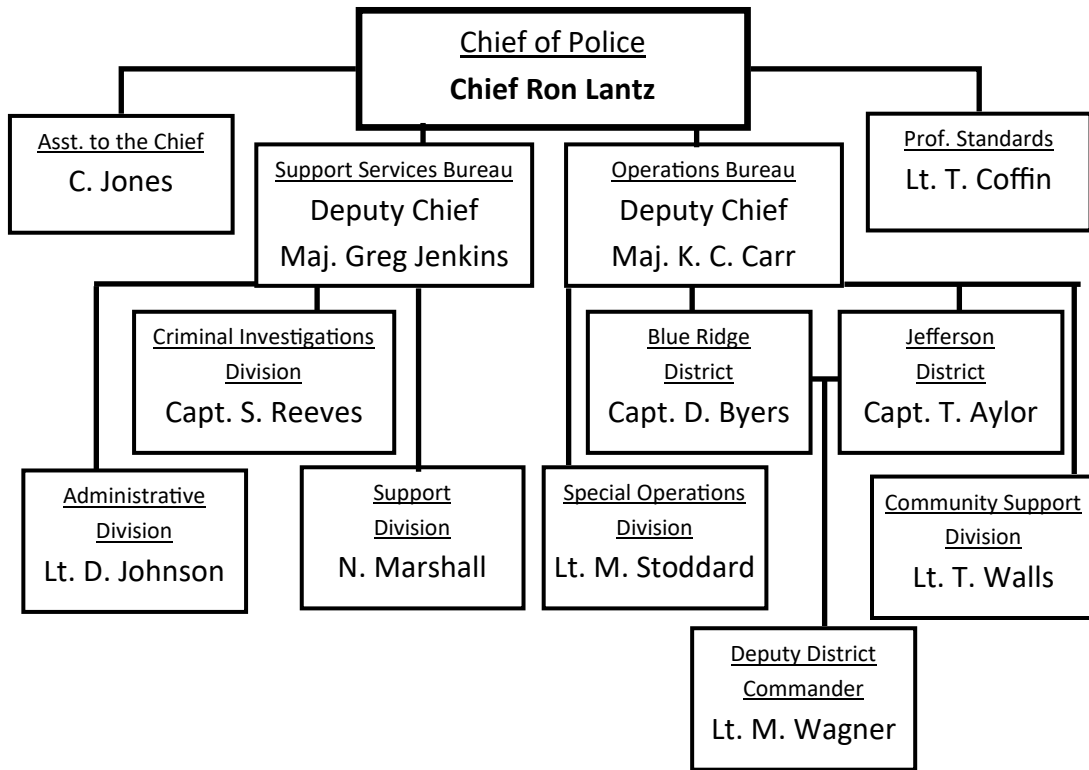
SERVICE AREA AND POPULATION

Albemarle County Police Department Geographic Districts



Located in Central Virginia, Albemarle County has an area of 726 square miles. The county is a unique blend of rural and urban developments with an estimated population of 108,639 (Weldon Cooper Center for Public Service, 2018). In 2012, the Albemarle County Police Department divided the county into the Jefferson District and the Blue Ridge District. Officers are regularly assigned to one of these two districts and continue to work closely with local residents and business owners to establish trust and strengthen collaboration between the police and community.

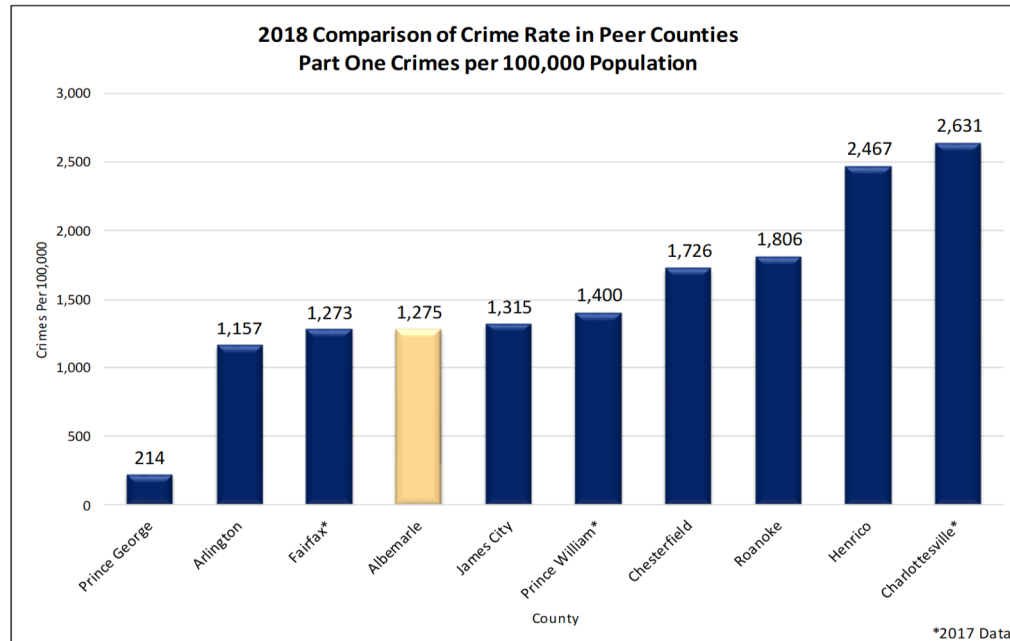
ORGANIZATIONAL CHART



Commander Strategic Planning Meeting May 2018

2018 PART 1 CRIME STATISTICS

OFFENSE	2013	2014	2015	2016	2017	2018	% Change 17-18
HOMICIDE	1	1	1	1	6	2	-66.7%
FORCIBLE RAPE	24	8	25	14	27	21	-22.2%
AGGRAVATED ASSAULTS	50	47	41	34	37	71	91.9%
ROBBERY	24	12	13	21	10	20	100.0%
TOTAL CRIMES AGAINST PEOPLE	99	68	80	70	80	114	42.5%
BREAKING & ENTERING	209	201	175	145	146	123	-15.8%
STOLEN MOTOR VEHICLES	43	48	49	61	74	56	-24.3%
LARCENIES	1,408	1,352	1,100	1,070	1,085	1,092	0.6%
TOTAL PROPERTY CRIMES	1,660	1,601	1,324	1,276	1,305	1,271	-2.6%
TOTAL PART 1 CRIMES	1,759	1,669	1,404	1,346	1,385	1,385	0.0%



ACPD 2018 ARREST DATA

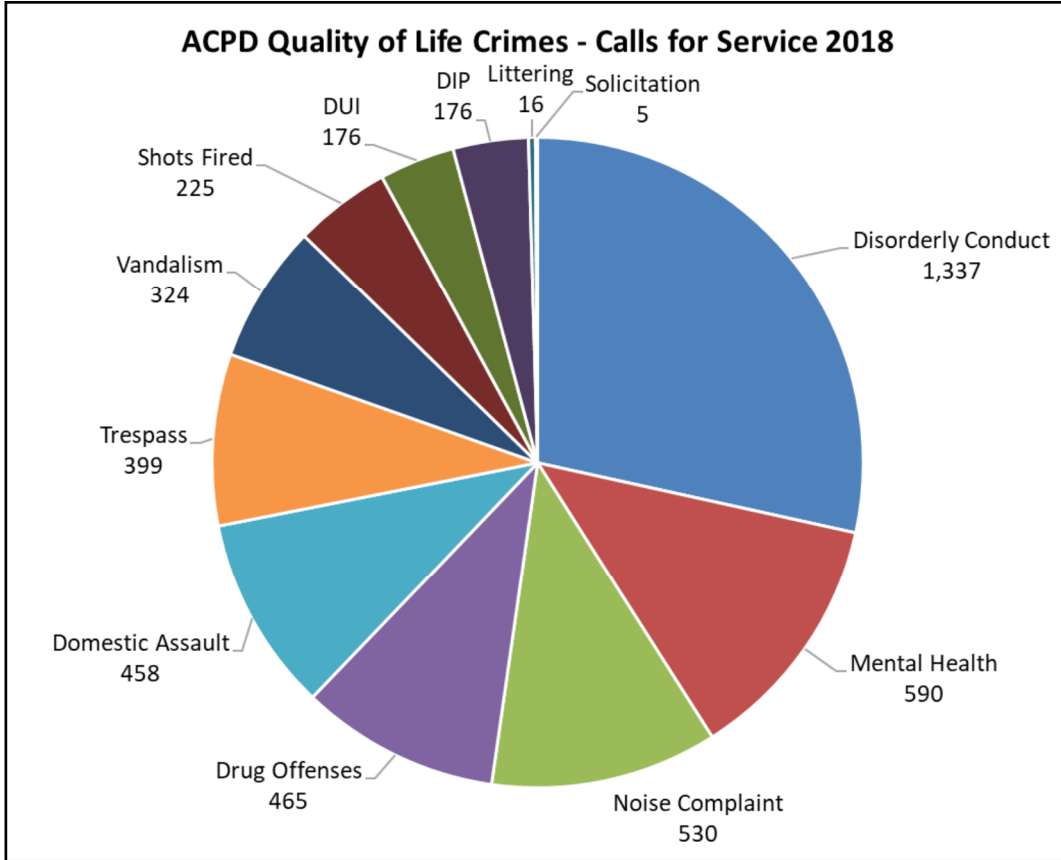
Albemarle County Police Arrests by Race - CY 2018			
Race	Num. Arrests	Percentage	State Percent*
White	1,406	68.9%	57.8%
Black	583	28.6%	41.0%
Asian/Pac. Islander	17	0.8%	1.1%
Unknown	26	1.3%	0.0%
Not Listed	8	0.4%	0.0%
Total	2,040	100.0%	100.0%*

**Source: 2017 Crimes in VA. Note 0.1% in VA State were American Indian or Alaskan Native.*



Albemarle County Police Arrests by Ethnicity - CY 2018			
Ethnicity	Num. Arrests	Percentage	State Percent*
Not of Hispanic Origin	1,742	85.4%	Unavailable
Hispanic Origin	191	9.4%	Unavailable
Unknown	71	3.5%	Unavailable
Not Listed	36	1.8%	Unavailable
Total	2,040	100.0%	Unavailable

ACPD 2018 Quality of Life Issues



Number of Calls for Service Dispositioned Mental Health by Year		
Year	Number of Calls for Service	% Change
2014	468	—
2015	579	+23.7%
2016	536	-7.4%
2017	575	+7.3%
2018	590	+2.6%
Total	2,748	

ACPD CALLS FOR SERVICE IN 2018

Albemarle County Police Calls for Service Date - Calendar Year 2018
Total Calls for Service: 48,271 (1.07% increase as compared to 2017)
ECC-Initiated: 28,247 (3.02% increase from 2017)
Officer-Initiated: 20,024 (1.56% decrease from 2017)
*This excludes all call activity by non-ACPD agents, unassigned calls, administrative calls, and officer-initiated extra patrols.

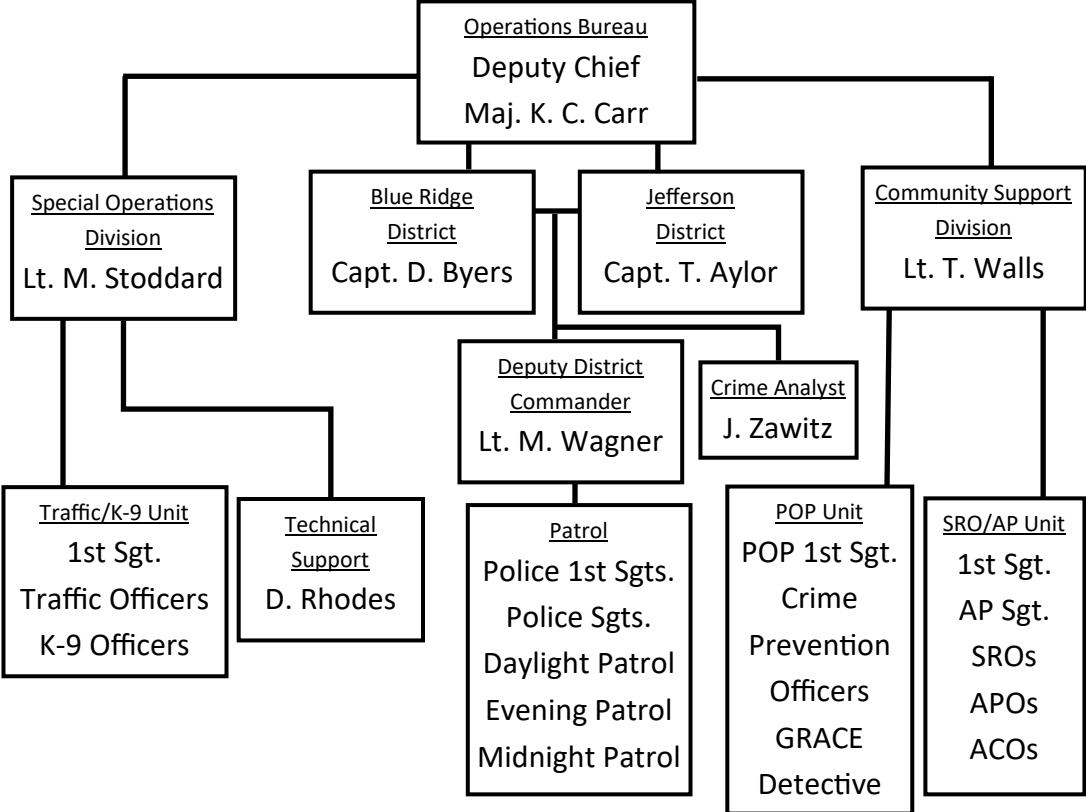
Average Response Time in		
All Priority 1 Calls 199 Calls	Urban Areas 158 Calls	Rural Areas 41 Calls
1st Officer = 4:53 minutes	1st Officer = 3:21 minutes	1st Officer = 10:49 minutes
2nd Officer = 6:37 minutes	2nd Officer = 4:52 minutes	2nd Officer = 13:43 minutes
No Response Time Goal set	Response Time Goal attained 82% of the time	Response Time Goal attained 51% of the time



A Priority 1 call includes, but is not limited to: murder, rape, aggravated assault, vehicle crash with injury, shots fired, calls involving a weapon, and officer needing assistance. The goal in responding to Priority 1 calls is five (5) minutes or less in urban areas and ten (10) minutes or less in rural areas.

OPERATIONS BUREAU

JEFFERSON AND BLUE RIDGE DISTRICTS



The Operations Bureau is responsible for providing traditional policing services while establishing partnerships that meet the needs of a changing community. Rooted in the principles of community-oriented policing, the Operations Bureau works with community members and business owners to identify problems and implement strategies to reduce crime. More than 70 percent of the department’s sworn staff is assigned to this bureau.

The Patrol division is divided into the Blue Ridge District and the Jefferson District. Officers are assigned to an individual district and are responsible for outreach in their area. The Special Operations Division is responsible for traffic safety education and enforcement, as well as K-9 partnership and support. The Community Support Division is tasked with school safety, animal control, and problem-oriented policing initiatives.

OPERATIONS BUREAU

PATROL DIVISION

The Patrol Division is responsible for answering calls for service, investigating incidents, and engaging with the community to solve and prevent crime. It is the mission of the Albemarle County Police Department to provide for the safety and security of our many diverse citizens while protecting individual rights and delivering quality service. The Patrol Division embraces this mission and strives to provide superior service to the public every day.

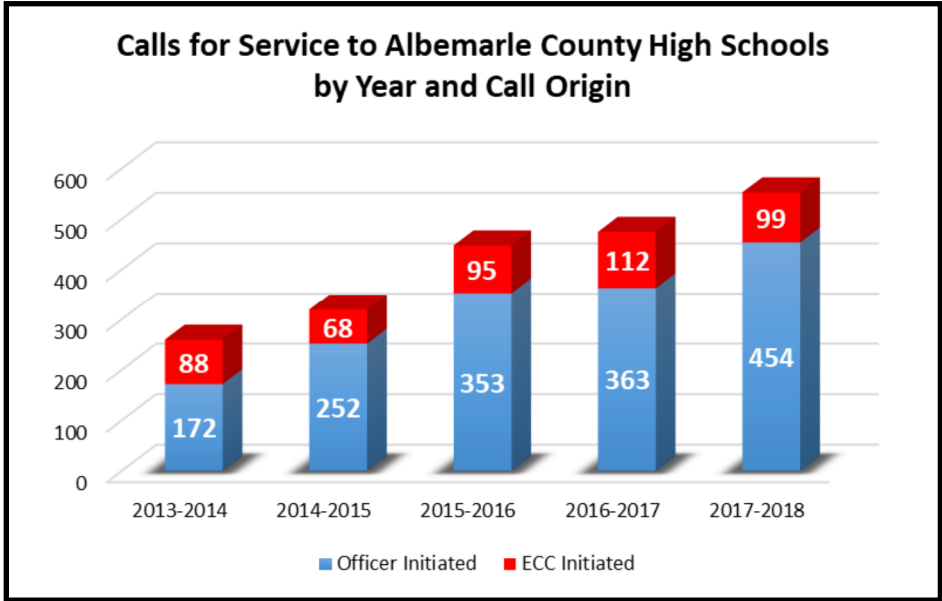
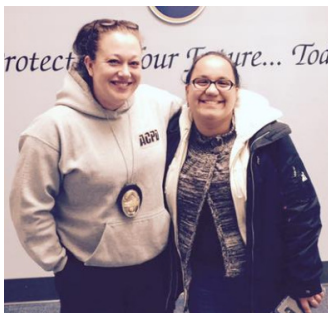


ACPD citizen engagement efforts include events like Coffee with a Cop, National Night Out, and bike rodeos.

OPERATIONS BUREAU

COMMUNITY SUPPORT DIVISION— SROs

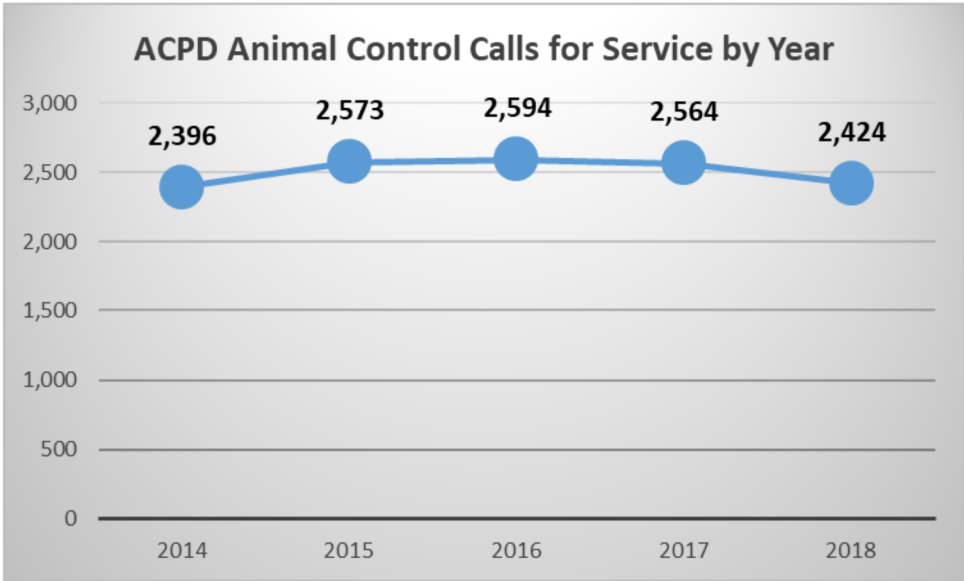
The Albemarle County Police Department provides a safe learning environment by allocating school resource officers to work within area schools. Realizing the importance of community partnerships, school resource officers regularly strive to create and sustain an atmosphere based on trust, cooperation, and understanding with students, teachers and staff.



OPERATIONS BUREAU

COMMUNITY SUPPORT DIVISION—APU

The Animal Protection Unit encourages responsible pet ownership and the humane treatment of animals through education, as well as enforcement of state laws and county ordinances related to the health and safety of domestic animals. The Unit is staffed with two (2) sworn animal protection officers and two (2) civilian animal control officers. Members of the unit work collaboratively, investigating criminal offenses like animal cruelty and assisting the local health department on other related matters.



OPERATIONS BUREAU

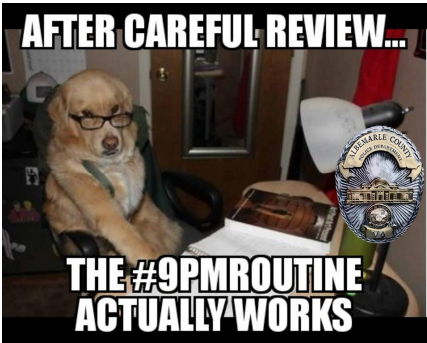
COMMUNITY SUPPORT DIVISION—POP

The Problem Oriented Policing (POP) Unit is tasked with examining ongoing quality of life issues in the county, focusing on community engagement and repeat calls for service. The POP Unit systematically analyzes crime trends and problems in the county and generate solutions for these issues. A key component of POP is evaluating the effectiveness of these solutions through data-driven measures. In 2017 and 2018, several arrest were made in a series of motor vehicle theft and larcenies from motor vehicles as a result of a joint POP/Patrol/Investigations effort. This led to a 24% decrease in motor vehicle thefts and a 17% decrease in larcenies from motor vehicles.



#9PMROUTINE

This routine is a nightly reminder to remove valuables from your vehicle and lock the doors. By doing this routine we hope to reduce thefts from vehicles. Join us every evening around 9:00 p.m. on Twitter and don't forget to let us know that you have "Locked Up."



OPERATIONS BUREAU

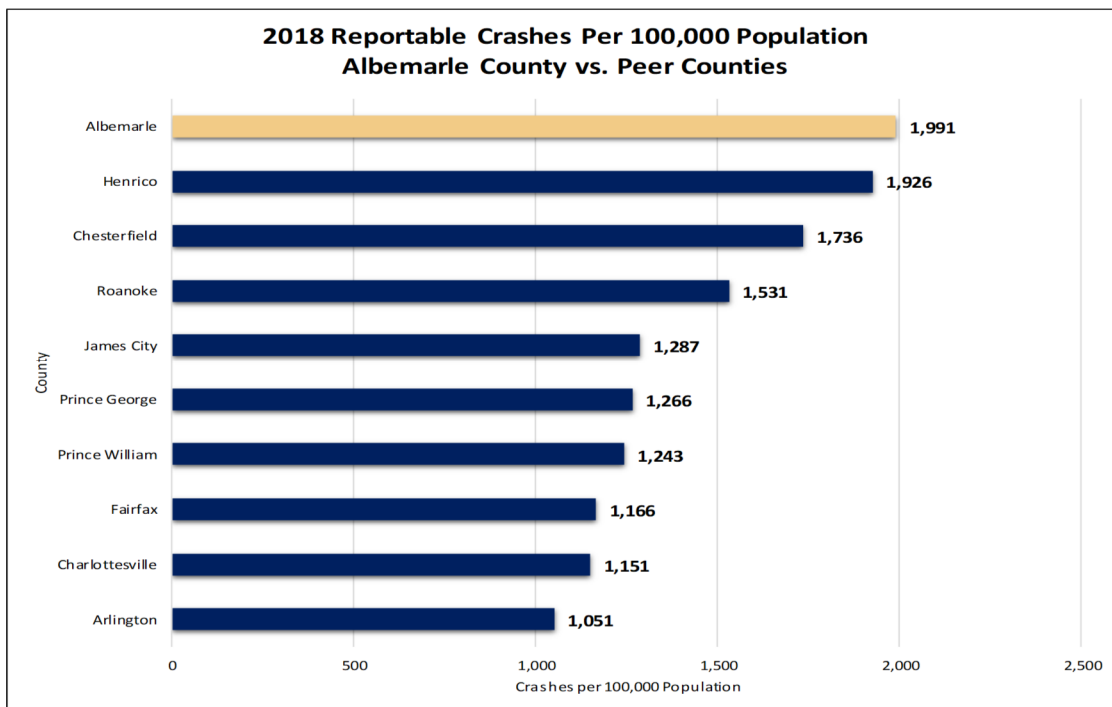
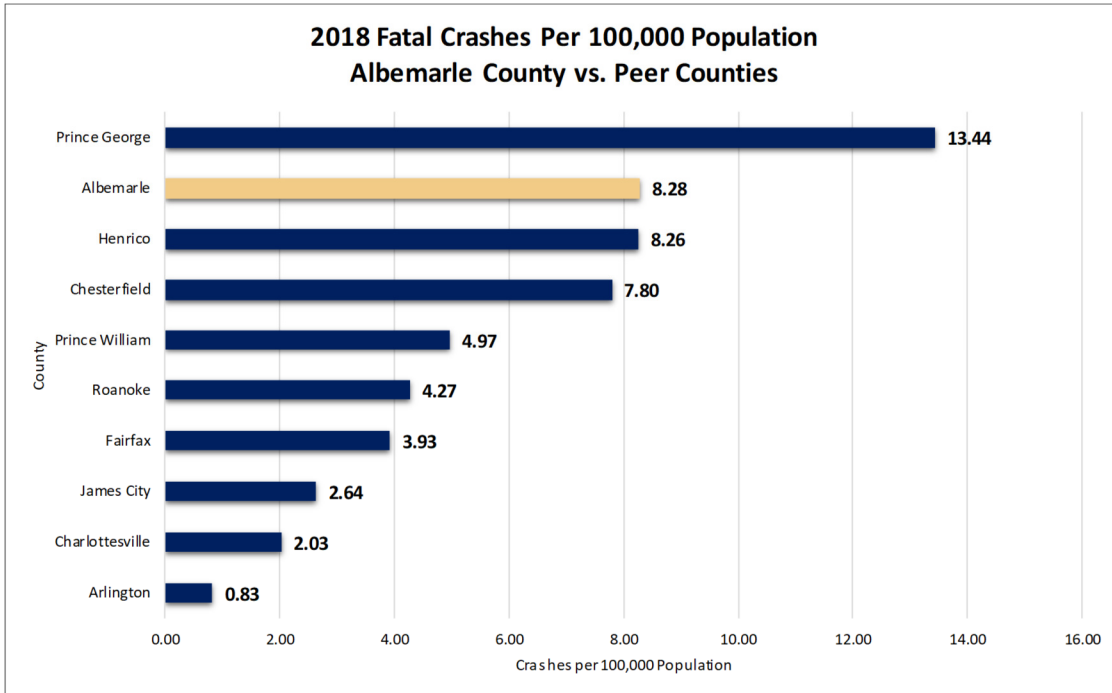
SPECIAL OPERATIONS DIVISION—TRAFFIC



The Traffic Unit is comprised of five (5) officers and a First Sergeant tasked with education and enforcement efforts of traffic safety laws. In addition, they conduct commercial motor vehicle inspections, facilitate safe participation in community events, and address traffic-related issues throughout the county. Traffic safety and changing driver behavior through education remain top priorities for the ACPD.

	Crashes	Fatalities	Traffic Stops	Summonses	DUI Arrests
2016	2,218	9	12,194	7,153	177
2017	2,111	11	13,230	10,077	174
2018	2,163	10	13,172	8,509	176

2018 COUNTY TRAFFIC STATISTICS



2018 COUNTY TRAFFIC STATISTICS

Albemarle County Police Department Summonses by Race CY 2018		
Race	No. Summonses	Percentage
White	6,661	78.3%
Black	1,460	17.2%
Asian/Pac. Islander	97	1.1%
Amer. Indian/Alaskan Native	3	<0.1%
Other	2	<0.1%
Unknown	162	1.9%
Not Listed	124	1.5%
Total	8,509	100.0%

Albemarle County Police Department Summonses by Ethnicity CY 2018		
Ethnicity	No. Summonses	Percentage
Not of Hispanic Origin	4,293	50.5%
Hispanic Origin	312	3.7%
Unknown	218	2.6%
Not Listed	3,686	43.3%
Total	8,509	100.0%

OPERATIONS BUREAU

SPECIAL OPERATIONS DIVISION—K-9



There are five (5) officers in the K-9 Unit, each with unique skills and training. K-9 Bella is a bloodhound with superior tracking skills. K-9s Sultan, Milo, and Riso are tasked with assisting patrol investigations and large scale operations. K-9 Cleo works with her partner across the region to search for explosives and weapons at airports, large public events, schools, and areas before dignitary visits.

COMMUNITY EVENTS

LAW ENFORCEMENT TORCH RUN

The Torch Run began in 1981 to gain community support for Special Olympics. ACPD serves as Guardians of the Flame as it passes through Albemarle County annually.



SPECIAL OLYMPICS POLAR PLUNGE

Officers took the plunge in ice cold water on February 2, 2018 to support the Special Olympics.



CITIZEN'S POLICE ACADEMY

During April and May, citizens participated in the Citizen's Police Academy. The next academy is scheduled for fall 2019. If you would like to participate, please contact the Police Department at (434) 296-5807.

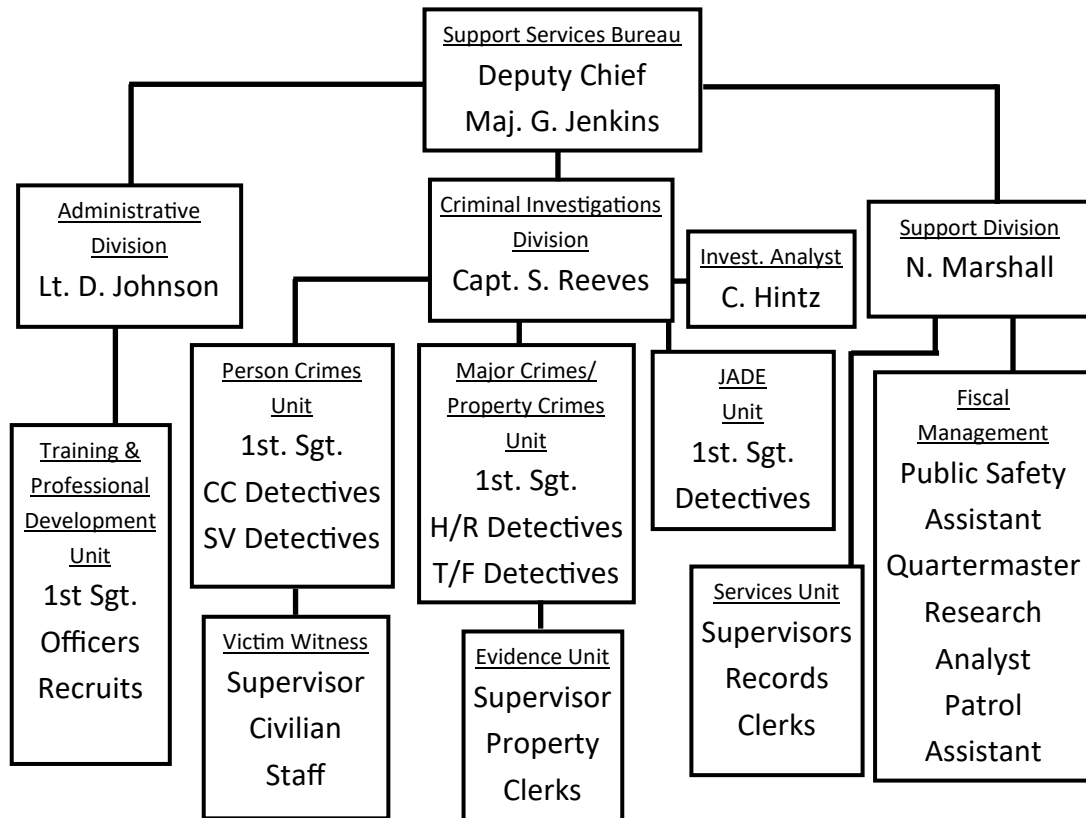


TOY LIFT

ACPD participates in the Toy Lift Charlottesville annually. The Toy Lift has been collecting and distributing toys to local children for over 30 years.



SUPPORT SERVICES BUREAU



The Support Services Bureau is responsible for a wide variety of police services. Detectives are included in this bureau and are divided into Person Crime detectives and Property Crime detectives. In 2018, an effort was made to have detectives specialize in specific crimes to better track trends and hone their skills in a specialized area. The Victim Witness team provides support to victims of crimes, while the Evidence Unit handles the wide variety of evidence collected by officers and detectives.

The Support Division provides services to both internal and external customers. Tasks ranging from issuing uniforms and equipment to assisting citizens in the front lobby are handled in this unit. The Training and Professional Development Unit maintains the certification of personnel through interdepartmental and external training while working to recruit new officers to continue the department's commitment to the community.

SUPPORT SERVICES BUREAU

CRIMINAL INVESTIGATIONS DIVISION (CID)

HOMICIDE/ROBBERY UNIT (H/R) - Both homicides that occurred in 2018 yielded arrests. 2018 also saw the conviction of five (5) suspects in a 2017 gang-related homicide. In addition, detectives reopened a cold case dating back to 2004 in which two (2) subjects were ultimately arrested in relation to the 14-year-old homicide.

THEFT/FRAUD UNIT (T/F) - The Theft/Fraud Unit devotes significant attention to stolen property and fraud crimes, including stolen vehicles and adult protective services. In 2018, vehicles were recovered in 77% of the cases, and detectives arrested several individuals related to these incidents. Investigators also worked with the Virginia House of Delegates Committee on Commerce and Labor on a proposal aimed at stemming financial abuse perpetrated against adults over 60.

CYBERCRIMES UNIT (CC) - This unit focuses on computer forensics, as well as proactive and reactive investigations involving child abuse and exploitation involving the internet. In 2018, there were three (3) arrests in child pornography cases and seven (7) arrests for online solicitation. The unit also assisted with four (4) cases in surrounding counties.

SPECIAL VICTIMS UNIT (SV) - Community donations allowed detectives to create a specialized interview room for survivors of sexual violence. During this difficult time, this room provides a space that offers both physical and emotional security to those in need.



SUPPORT SERVICES BUREAU

CID —Jefferson Area Drug Enforcement

Seized Drugs By Year					
Drug Type	2014	2015	2016	2017	2018
Marijuana	24.59 lbs.	36.37 lbs.	27.75 lbs.	102.41 lbs.	2,383 g.
Cocaine (Powder)	1,091.60 g.	963.11 g.	1,294.80 g.	1,393.32 g.	403 g.
Cocaine (Crack)	350.49 g.	540.70 g.	458.10 g.	103.40 g.	96 g.
Methamphetamine	1,702.20 g.	1,018.90 g.	188.02 g.	243.20 g.	5,015 g.
Heroin	72.82 g.	43.80 g.	52.41 g.	97.12 g.	35.0 g.
Ecstasy	48.00 g.	0.00 g.	0.00 g.	146.00 g.	167 g.

In 2018, the Jefferson Area Drug Enforcement (J.A.D.E.) Taskforce made significant arrests for the trafficking of cocaine and methamphetamines into Albemarle County. In addition to the above items, J.A.D.E. detectives seized 44 grams of pharmaceuticals. The total value of drugs seized in 2018 was estimated to be \$204,000.00.

In addition to illegal drugs, J.A.D.E. detectives seized 34 weapons, 1 vehicle, and \$86,370.40 in U.S. currency. There were 11 interdiction operations conducted, 27 search warrants issued, and 179 controlled purchases made, resulting in 117 felony arrests with 22 charges pending.



1,040 lbs. of prescription and OTC medications accepted during the National Drug Take-back Event

SUPPORT SERVICES BUREAU

CID—VICTIM WITNESS

Victim Witness Advocates provided services to 1,350 crime victims in 2018. Advocates also assisted nine (9) victims in filing claims with the Virginia Victims Fund. In addition to providing these services, advocates regularly participate in community events, panel discussions, and training opportunities focused on domestic violence, sexual assault, and crimes against adults over 60.

Members of this unit recognize that having an advocate who could effectively assist our community's Hispanic population is essential. A program brochure in Spanish was created in 2018. Additionally, acquisition of grant funds enabled a part-time bilingual advocate to be hired. Efforts to secure this position as both permanent and full time are underway.

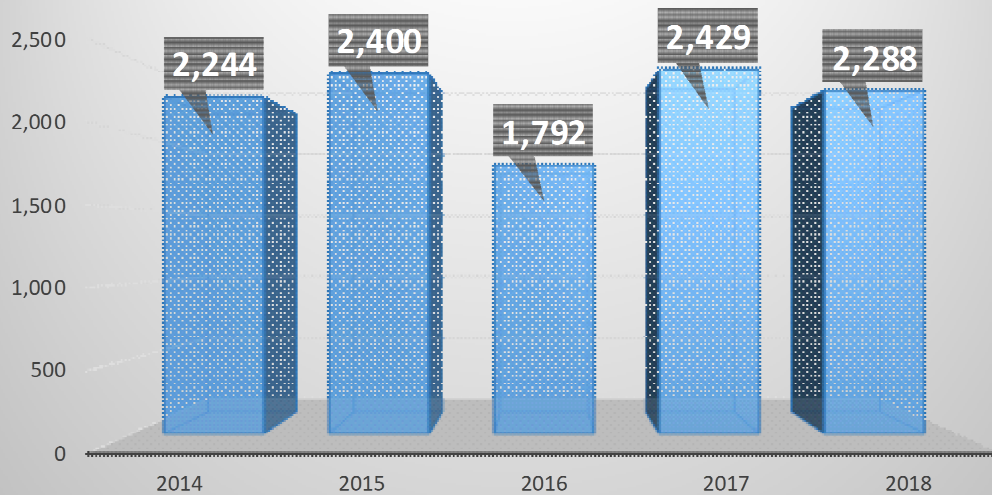


SUPPORT SERVICES BUREAU

CID—EVIDENCE UNIT

The Property Evidence Unit is responsible for recording and providing safe storage of all incoming property and evidence. This unit is also tasked with making evidence available for court, satisfying lab requests, and disposing of evidence as required by state law.

ACPD Total Pieces of Evidence Received by Year



SUPPORT SERVICES BUREAU

SUPPORT DIVISION—SERVICES UNIT/FISCAL MANAGEMENT

The Support Division consists of three (3) units: the Services Unit, the Fiscal Management Unit, and the Planning/Accreditation Unit, all of which provide civilian support for law enforcement operations in Albemarle County.

This division is responsible for maintaining all agency records and providing customer service to both citizens and employees. Members also manage all fiscal responsibilities of the department, ensuring the department continues to maintain its State Accreditation status. All of these functions are vital to the efficient and effective operation of the Police Department.

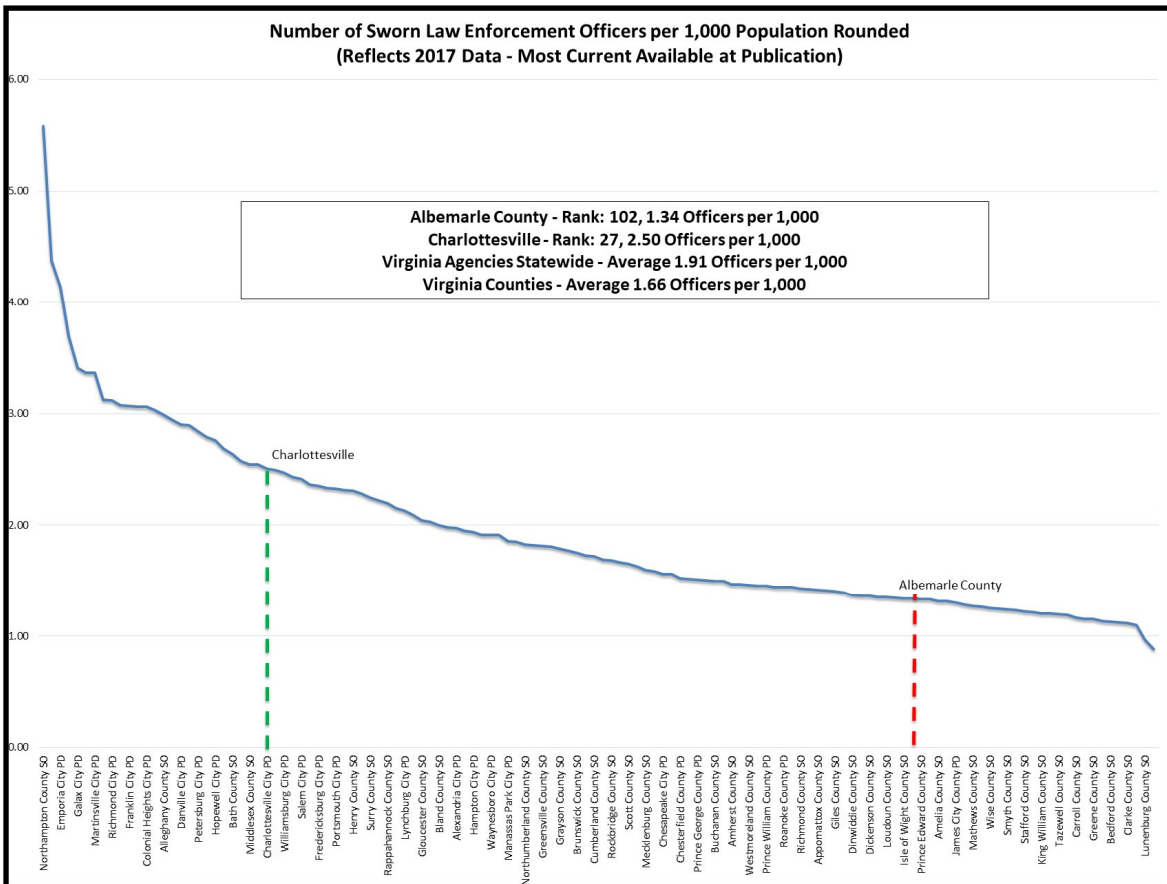


AUXILIARY POLICE



Auxiliary Police Officer Statistics					
	House Checks	Extra Patrol	Hours	Hourly Labor Value	Total Cost Savings
2016	577	1,768	2,915.50	\$26.09	\$76,065.40
2017	455	2,602	2,604.50	\$26.96	\$70,217.32
2018	405	2,283	1,930.00	\$26.75	\$51,627.50

STAFFING



May 2018 Recruits



November 2018 Recruits

AWARDS AND RECOGNITION

OFFICER OF THE YEAR:

Officer Steve McCall

DETECTIVE OF THE YEAR:

Detective Jon Seitz

CIVILIAN OF THE YEAR:

Analyst Jenny Zawitz

VOLUNTEER OF THE YEAR:

Auxiliary Officer John Mallet

Auxiliary Officer Richard Smith

COMMUNITY SERVICE AWARD:

Officer Laura Proffitt

CHIEF'S EAGLE AWARD:

First Sergeant Ben Reeves

COLONEL STEVE SELLERS AWARD:

Captain Sean Reeves

VALOR AWARD:

Officer Paul Quillon

PROFESSIONALISM AWARD:

Officer Casey Flippin

ONE ORGANIZATION AWARD:

Officer David Rhodes (Internal)

Mr. Trevor Henry (External)



VACP Lifesaving Award — Ofc. Quillon



MADD Law Enforcement Award—Ofc. Kane



2nd place—2018 Virginia Law Enforcement Challenge



CIT Trainer of the Year—Det. Wells

COMMUNITY FEEDBACK

70

Complaints
against officers



112

Commendations
for officers

Response to Resisting Arrest and Use of Force

In 2018, Albemarle County Police Officers made 2,040 arrests. On 11 occasions, officers were required to use force to overcome resistance or threat.

The most common response to resistance was physical or hands on, with no founded excessive force cases in 2018.

In 2018, there were six (6) assaults on ACPD officers with six (6) officers injured. There were seven (7) assaults in 2017 and ten (10) assaults on officers in 2016.

CONTACT US

To file commendations or complaints:

434-296-5807

coffint@albemarle.org

askthechief@albemarle.org

www.albemarle.org/police



/AlbemarleCoVAPolice



@ACPD_VA



@acpd_va



4th Annual Putt-Putt With The Police

Putt Putt with the Police is a free annual event coordinated by the Albemarle County Police Foundation. This event is designed to develop positive community relationships. Kids have the opportunity to play miniature golf with their local police officers. Everyone gets to explore police vehicles and meet K-9 Bella in 2018. This is the fourth year that this event has been held.



FUN CENTER
Putt-Putt

FREE EVENT!

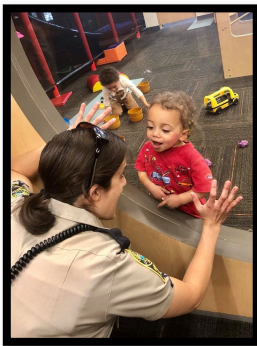
Putt Putt with the Police **PRIZES**

June 13th
1:00 - 5:00pm

MEET A K-9 FUN ACTIVITIES & GIVEAWAYS!
refreshments **EXPLORE POLICE VEHICLES**



Supporting Those Who Protect Us.



www.acpdfoundation.org

Mission

To promote public safety by supporting the Police Department in its efforts to be a professional, highly educated and trained organization, equipped to prevent crime and enhance the overall safety of our community.

Events

- ◆ Awards Banquet
- ◆ Putt Putt With The Police
 - ◆ Clays For Cops
- ◆ Guardians' Gauntlet



What We Do

- ◆ Educational Scholarships
- ◆ Housing Assistance Program
 - ◆ Training & Equipment
 - ◆ Community Outreach

Apply Today

albemarle.org/police or call (434) 293-0443

Protecting
Your Future
Today



JOIN OUR TEAM

Benefits Include

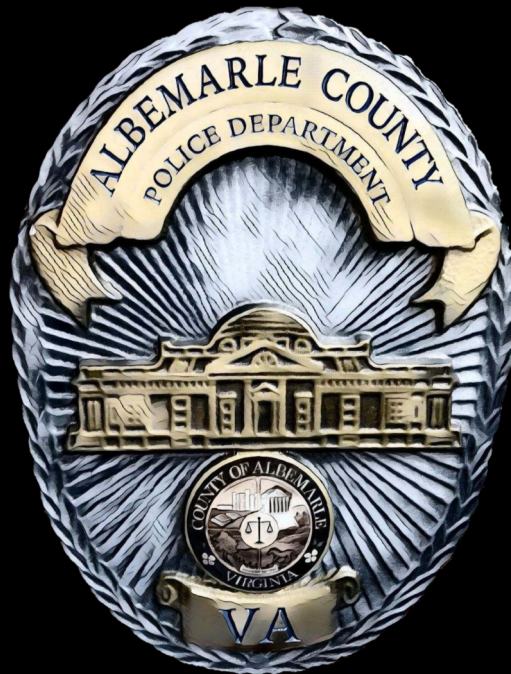
- Competitive Salary
- Take Home Car Program
- On Duty Wellness Program
- Competitive Benefits
- VRS Retirement
- Deferred Compensation Program (401k)
- Clothing Allowance
- Good Quality of Life

Benefits

- ◆ Take Home Car
- ◆ Educational Incentive
- ◆ Work Out Time On Duty
- ◆ Virginia Retirement System (VRS)
- ◆ Uniform Allowance
- ◆ Compensated Military Leave
- ◆ Public Safety Pay Scale

Minimum Qualifications

- ◆ At Least 21 Years of Age
- ◆ High School Graduate or GED
- ◆ Valid Virginia Driver's License
- ◆ Citizen of the United States
- ◆ Written Test
- ◆ Physical Agility Test
- ◆ Background Investigation
- ◆ Polygraph



ALBEMARLE COUNTY POLICE DEPARTMENT

1600 5th Street, Suite D
Charlottesville, VA 22902
Headquarters: 434-296-5807
CrimeStoppers: 434-977-4000
www.albemarle.org/police
[@ACPD_VA](https://twitter.com/ACPD_VA)