

ALBEMARLE COUNTY POLICE DEPARTMENT



2016 ANNUAL REPORT

COUNTY OF ALBEMARLE

Board of Supervisors

Rick Randolph

Scottsville District

Diantha McKeel

Jack Jouett District

Liz Palmer

Samuel Miller District

Brad Sheffield

Rio District

Ann Mallek

White Hall District

Norman Dill

Rivanna District

Doug Walker

Interim County Executive

Police Department

Ron Lantz

Chief of Police

Major K.C. Carr

Operations Bureau Deputy Chief

Major Greg Jenkins

Support Services Bureau Deputy Chief

TABLE OF CONTENTS

Chief's Message.....	2
Mission and Values.....	3
Organizational Chart.....	4
Strategic Plan.....	5
Service Area and Population.....	6
Jefferson and Blue Ridge Districts.....	7-9
Geographic-based Policing: The Journey Continues...10-11	
Crime Statistics.....	12-13
Arrest Data.....	14-15
JADE in 2016.....	16
Calls for Service.....	17
Mental Health Statistics.....	18-19
Traffic Statistics.....	20-21
Staffing.....	22
Auxiliary Police Program.....	23
Awards and Recognition.....	24-25
Outreach/Community Feedback/Contact Us	26-27
2016 in Pictures.....	28-31
Join Our Team.....	32

CREDITS

Produced by: Madeline Currott, Public Information Officer and Jenny Zawitz, Crime Analyst

Photography: 1SGT. Liz Gomez and MAJ. K.C. Carr (Cover Photos), Charles Winkler, CPT. Pete Mainzer, Sandro Gomez, and Madeline Currott

MESSAGE FROM CHIEF RON LANTZ...

On behalf of the men and women of the Albemarle County Police Department, welcome to our 2016 Annual Report.

2016 brought about several changes to the ACPD including the swearing in of the 5th Chief in June. Colonel Steve Sellers brought five-and-a-half years of fantastic leadership to this agency, with an emphasis on innovation and enhanced customer service. As your Chief, I have endeavored to carry on this energy by continuing to hire the best candidates possible, improving our equipment and technology, enhancing our service delivery, and continuing an emphasis on Geographic-based Policing.

The year yielded 128 officer commendations from our citizens and a reduction in citizen-generated complaints. This truly indicates Geo-Policing is making a difference in our community through communication, engagement, and transparency.

The ACPD was re-accredited for another four years thanks to the professional work being done by our staff

on a daily basis. We held our first-ever Putt-Putt with the Police and Guardians Gauntlet, as well as numerous Coffee with a Cop events. We ended the year riding around town with the ACPD Santa spreading Holiday cheer across the County.

In 2016, we brought the police department to your communities in an effort to continue engagement, the exchange of ideas, and highlight our commitment to community. We will continue that throughout 2017 and beyond.

I am proud to be your Chief of Police. However, I am even prouder of the work being done by the men and women of the ACPD every day. Please know that your police department is committed to providing the best service

possible to you and in the most professional manner possible.

Thank you for your continued support and for truly helping us make Albemarle County a safe place to live, work, and visit.

Sincerely,
Ron L. Lantz
Chief of Police



MISSION STATEMENT AND CORE VALUES

The mission of the Albemarle County Police Department is to provide for the safety and security of our many diverse citizens and communities while protecting individual rights and delivering quality services.

Professionalism

Integrity

Unity

Diversity

Courage

Learning

Dedication

Preparedness

Accountability



Innovation

STRATEGIC PLAN



In 2016, the Albemarle County Police Department updated its strategic plan, and identified the following goals through 2019:

Goal 1: Strengthen Community Trust, Legitimacy and Accountability

Goal 2: Enhance Community Safety

Goal 3: Improve Transparency

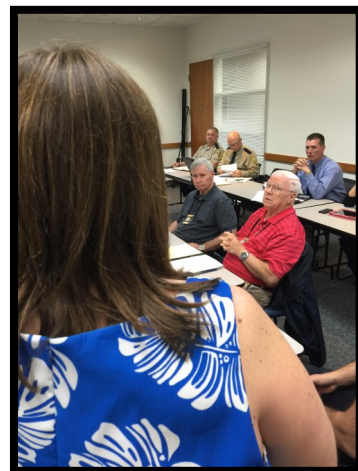
Goal 4: Invest In Our People

Our strategic plan addresses specific goals for the agency. It is supported by objectives, initiatives and performance measures.

As the department develops and progresses, the goals are updated to meet specific needs. The updates also ensure we are aligned with Albemarle County's overall strategic plan and working as *One Organization Committed to Excellence*.



Internal Strategic Planning Meeting



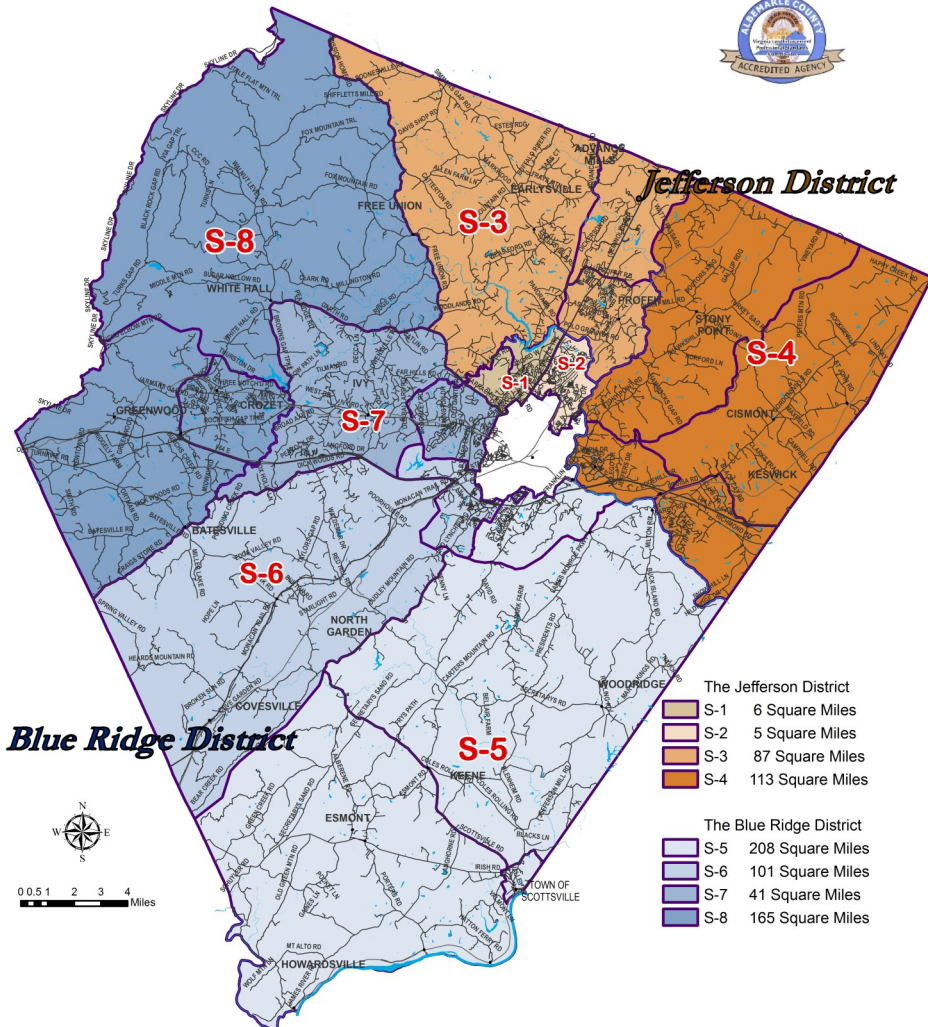
Crime Prevention Council Meeting



County Palooza 2016

SERVICE AREA AND POPULATION

Albemarle County Police Department Geographic Districts



Located in Central Virginia, Albemarle County has an area of 726 square miles. The County is a unique blend of rural and urban developments and has an estimated population of 105,715 (Weldon Cooper Center for Public Service). In 2012, the Albemarle County Police Department divided the County into two separate geographic districts: the Jefferson District and the Blue Ridge District. When the officers are assigned to their geographic districts, they are able to meet the specific needs of the community. They also build relationships within the community and employ crime prevention and problem solving initiatives. (See pages 8 and 9 for more.)

JEFFERSON AND BLUE RIDGE DISTRICTS

As your District Commanders, we remain committed to providing quality service to our community. Through our Geographic-based Policing Program, we continue to focus on developing effective relationships with our community that build public trust and confidence.

In 2016, we participated in a number of highly successful community engagement activities. Our Putt-Putt with the Police event, National Night Out and Community Town Hall series are examples of bringing neighborhoods together and strengthening relationships.

Please contact us if you have a question, concern, compliment, or would like us to stop by a neighborhood meeting, event or activity.

We continue to appreciate and value the support you have shown to the men and women of your Albemarle County Police Department.

Together, we are one community!

Captain Tim Aylor – *Blue Ridge District Commander*

Captain Peter Mainzer – *Jefferson District Commander*



JEFFERSON DISTRICT HIGHLIGHTS



BLUE RIDGE DISTRICT HIGHLIGHTS



GEOGRAPHIC-BASED POLICING:

Since 2012, the Albemarle County Police Department has been exercising Geographic-based Policing, also referred to as Geo-Policing or Community Policing.

We implemented Geo-Policing three years before the United States Department of Justice released the *Final Report of the President's Task Force on 21st Century Policing*. In that report, the task force recommended six pillars for law enforcement agencies to focus on in order to “promote effective crime reduction while building public trust”, as stated in the Executive Summary of the Final Report.

21st Century Policing Pillars:

Pillar One: Building Trust & Legitimacy

Pillar Two: Policy & Oversight

Pillar Three: Technology & Social Media

Pillar Four: Community Policing & Crime Reduction

Pillar Five: Training & Education

Pillar Six: Officer Wellness & Safety

We believe that Geo-Policing is the ACPD's most valuable tool as we move forward in how we protect, serve, and conduct business with our citizens and community.

Whether through outreach initiatives and educational campaigns, community engagements or everyday

interactions, we must establish relationships throughout the year and in between conflict so that we can create effective crime prevention and proactive problem solving in addressing crime and traffic issues at the root, as well as quality of life issues that affect Albemarle County citizens. These relationships are also crucial in breaking down barriers when a crisis happens so we come together as one to solve the situation as diplomatically and peacefully as possible.

When we began our Geo-Policing journey, which consists of three phases, we immediately divided Albemarle County into two geographic areas: the Blue Ridge District and the Jefferson District. (Please refer to pages 6 and 7 to see the map illustrating how the districts are split and hear from the commanders of the districts.)

You can expect to see the same group of officers patrolling where you live because they are consistently assigned to sectors within their respective districts. Our hope is that this familiarity allows you to develop a trusting partnership with them and that you ultimately feel safer in your community.

In addition to dividing the County into two parts and assigning a

THE JOURNEY CONTINUES WITH YOU

Crime Prevention Specialist to each district, Phase 1 of our Geo-Policing model also developed a command structure, the Special Operations Division, and our crime-mapping program. This phase also established the Chief's Crime Prevention Council (CPC) and created a Community Advisory Team (CAT) for each district. All of this was completed in 2013.

Next, the ACPD moved into Phase 2 and focused on staffing. This included reclassifying certain leadership and management positions, bringing on a full time Crime Analyst, increasing our School Resource Officer (SRO) Unit, developing our Auxiliary Police Officer (APO) program and establishing our Problem Oriented Policing (POP) Team. Phase 2 also reestablished our Citizens' Police Academy.

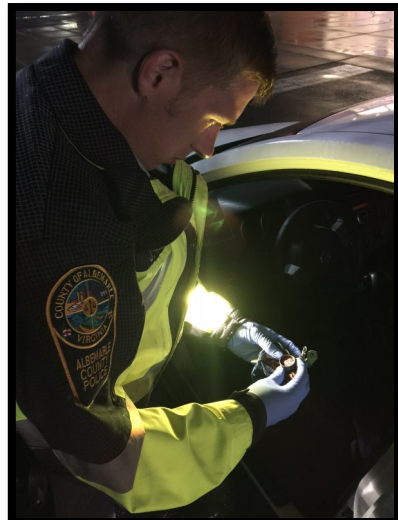
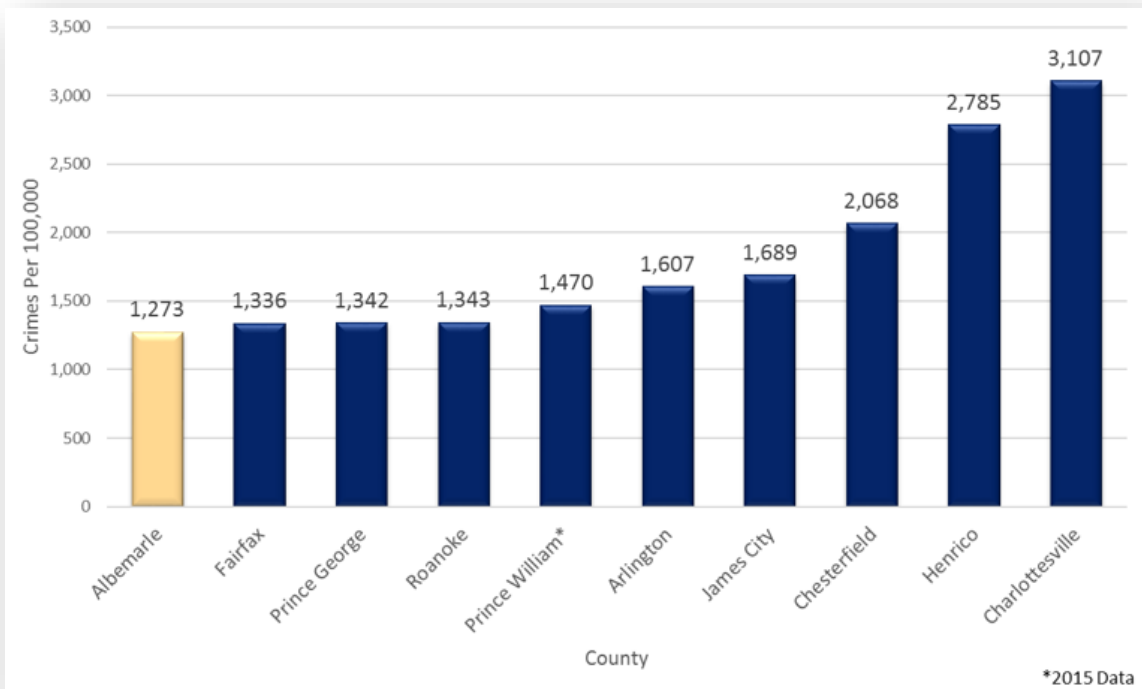
Currently, the ACPD is in Phase 3 of Geo-Policing, and it is here that we expect to be for the next five or more years. We are working to expand upon the districts and incorporate squad-based supervision so that our officers can benefit from the consistency internally as it relates to teamwork, evaluations and expectations. With this will come a realignment of sectors within the districts and district stations. A full implementation of the POP Team

is already underway, and our Training and Professional Development Unit (TPDU) is diligently working to provide a diverse police department because we know our agency must be reflective of the community we serve so there is a mutual respect present. Phase 3 will hopefully conclude with all of our efforts coming together in the form of our own training facility that will serve Central Virginia and beyond.

There is a necessary balance when it comes to fighting crime while upholding the trust of the public, but we see the value in this approach to policing and hope you all do as well. One thing we know to be true is that Geo-Policing is a philosophy that requires a shared responsibility between all of us to make Albemarle County a safe place to live, work and visit.

2016 CRIME RATE FOR VIRGINIA COUNTY POLICE DEPARTMENTS

Albemarle County, Peer County and City of Charlottesville Crime Rate Comparison



2016 PART 1 CRIME STATISTICS FOR ALBEMARLE COUNTY



OFFENSE	2012	2013	2014	2015	2016	% Change 2015-2016
HOMICIDE	4	1	1	1	1	0.0%
FORCIBLE RAPE	20	24	8	25	14	-44.0%
AGGRAVATED ASSAULTS	47	50	47	41	34	-17.1%
ROBBERY	18	24	12	13	21	61.5%
TOTAL CRIMES AGAINST PEOPLE	89	99	68	80	70	-12.5%
BREAKING & ENTERING	234	209	201	175	145	-17.1%
STOLEN MOTOR VEHICLES	51	43	48	49	61	24.5%
LARCENIES	1,209	1,408	1,352	1,100	1,070	-2.7%
TOTAL PROPERTY CRIMES	1,494	1,660	1,601	1,324	1,276	-3.6%
TOTAL PART 1 CRIMES	1,583	1,759	1,669	1,404	1,346	-4.1%

ACPD 2016 ARREST DATA

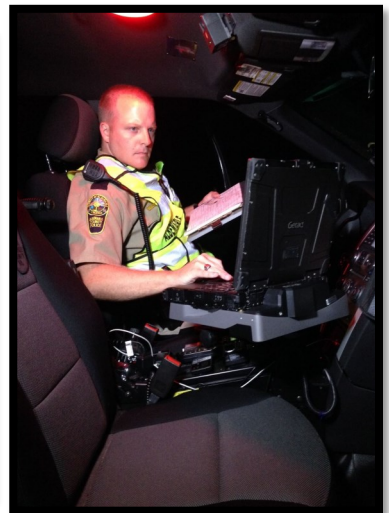
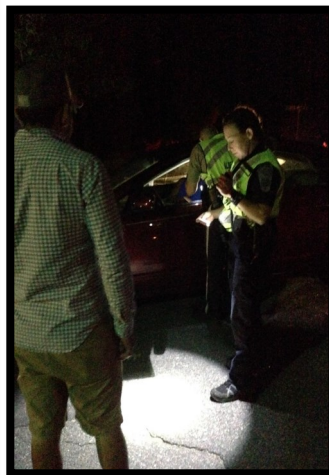
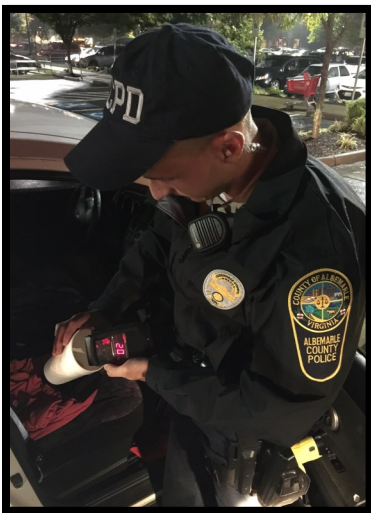
Albemarle County Police Arrests by Race - CY 2016			
Race	Num. Arrests	Percentage	State of VA Percentage*
White	1,509	69.1%	59.1%
Black	657	30.1%	39.8%
Asian or Pacific Islander	10	0.5%	1.0%
Unknown	8	0.4%	0.0%
American Indian or Alaskan Native	1	0.0%	0.1%
Grand Total	2,185	100.1%**	100.0%

*Source: 2015 Crimes in VA

**Rounding error

Albemarle County Police Arrests by Ethnicity - CY 2016		
Ethnicity	Num. Arrests	Percentage
Hispanic	196	9.0%
Non-Hispanic	1,892	86.6%
Not Provided	97	4.4%
Grand Total	2,185	100.0%

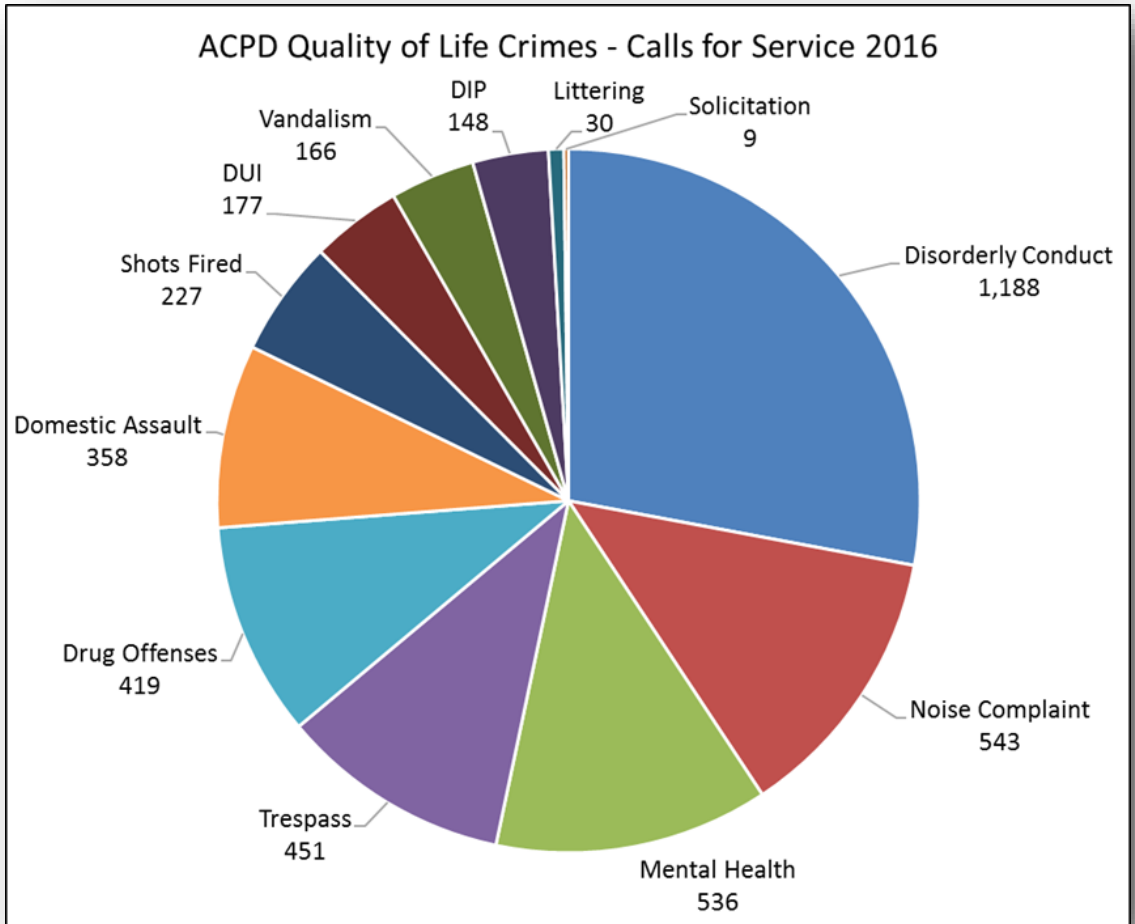
*Ethnicity not provided in 2015 Crimes in VA



ACPD 2016 ARREST DATA

Response to Resistance

- ➔ In 2016, Albemarle County Police Officers made 2,185 arrests. On 30 occasions, officers were required to use force to overcome resistance or threat.
- ➔ The most common response to resistance was physical or hands on, with no excessive force cases in 2016.
- ➔ In 2015, there were three assaults on officers. We saw a significant increase in that number as 10 of our officers were assaulted in 2016.



JEFFERSON AREA DRUG ENFORCEMENT

Seized Drugs by Year					
Drug Type	2012	2013	2014	2015	2016
Marijuana	35.12 lbs.	20.96 lbs.	24.59 lbs.	36.37 lbs.	27.75 lbs.
Cocaine (Powder)	559.72 g.	757.59 g.	1,091.60 g.	963.11 g.	1,294.80 g.
Cocaine (Crack)	780.10 g.	445.80 g.	350.49 g.	540.70 g.	458.10 g.
Methamphetamine	0.00 g.	232.50 g.	1,702.20 g.	1,018.90 g.	188.02 g.
Heroin	37.10 g.	26.42 g.	72.82 g.	43.80 g.	52.41 g.
Ecstasy	5.00 g.	27.00 g.	48.00 g.	0.00 g.	0.00 g.

The Jefferson Area Drug Enforcement Task Force, or JADE, is a team comprised of detectives from Albemarle County, Charlottesville City, Virginia State Police and The University of Virginia.

There were 232 total arrests made by JADE in 2016. Eighty-nine were in Albemarle County.

After a record year in 2015 with 66 guns seized, JADE's numbers normalized to 15 firearms taken off the streets in 2016. The normal expected range is between 14 and 24. JADE has seized 133 firearms since 2012.

Total Cocaine seized: 1,752.90 grams.

Total Methamphetamine seized: 188.02 grams.

Total Marijuana seized: 27.7 pounds.

BREAKING DOWN ACPD CALLS IN 2016

Albemarle County Police Calls for Service Data - CY 2016

Total Calls for Service: 46,016 (no significant change as compared to 2015)

ECC-Initiated: 27,729 (up 5.48% from last year)

Officer-Initiated: 18,287 (down 8.12% from last year)

***This excludes all call activity by non-ACPD agents, unassigned calls, administrative calls, and officer-initiated extra patrols.**

A Priority 1 call includes, but is not limited to: murder, rape, aggravated assaults, vehicle crashes with injuries, shots fired, calls involving weapons and officers needing assistance. Our goal in responding to Priority 1 calls is five minutes or less in Urban Areas and 10 minutes or less in Rural Areas.

Average Response Time

All Priority 1 Calls 153 Calls	Urban Areas 114 Calls	Rural Areas 39 Calls
1st Officer = 5:30 minutes	1st Officer = 4:02 minutes	1st Officer = 9:58 minutes
2nd Officer = 8:13 minutes	2nd Officer = 6:14 minutes	2nd Officer = 13:51 minutes
No Response Time Goal set	Response Time Goal attained 74% of the time	Response Time Goal attained 51% of the time

BREAKING DOWN MENTAL HEALTH CALLS

The Albemarle County Police Department recorded a total of 2,464 mental health calls from 2012-2016 with 2015 seeing the biggest jump in mental health calls for service at nearly a 24% increase.

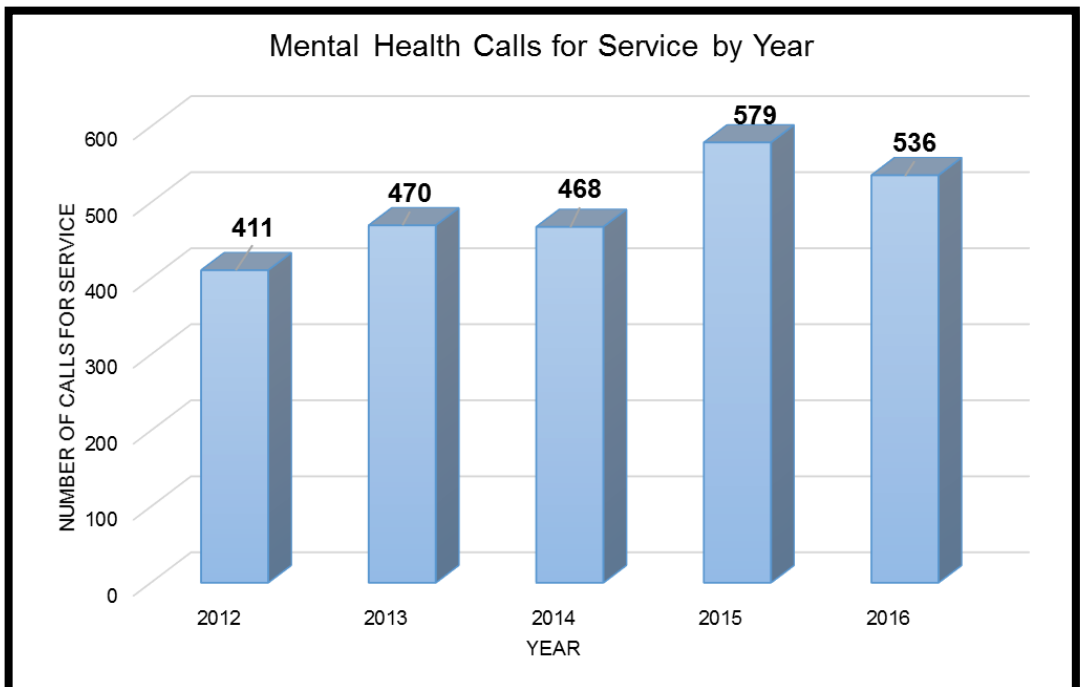
The ACPD is devoted to assisting those in our community suffering from mental illness and crisis events. The Department is also committed to training 100% of its officers in Crisis Intervention (CIT) to better serve our citizens.

CIT training is aimed at reducing the stigma of mental illness, understanding the behaviors and practicing de-escalation techniques through practical exercises.

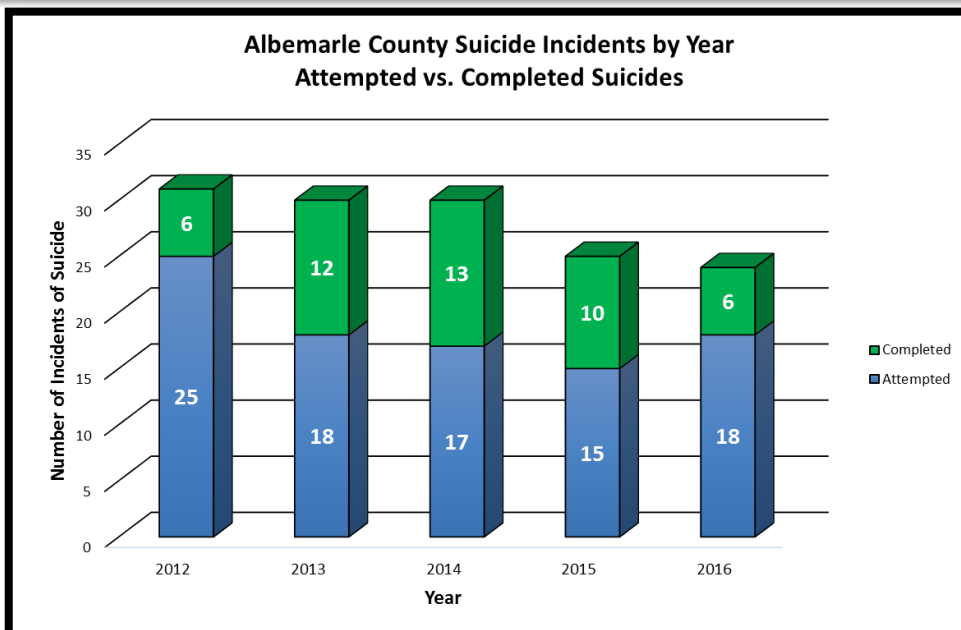
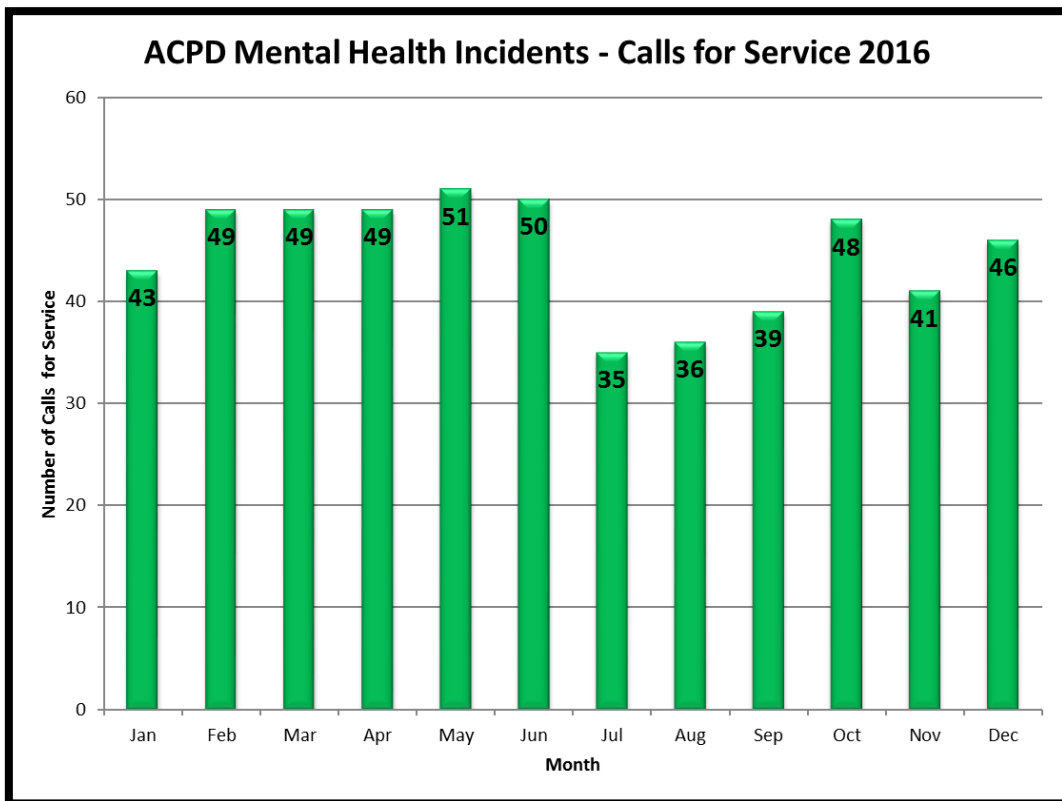
The ACPD trained 14 officers in 2016 and has just under 50% of the force certified in CIT to date.

The ACPD also staffs a Crisis Response Team that prides itself in using a proactive approach to helping citizens before a crisis event occurs.

Team members work hard to build and maintain relationships with those in our community who are suffering with mental illness. The team also partners with agencies such as Region Ten, Department of Social Services and UVA Health Systems to provide valuable resources, treatment, education and support to the citizens and their families.



BREAKING DOWN MENTAL HEALTH CALLS



2016 COUNTY TRAFFIC STATISTICS

Traffic safety and changing driving behavior through education remain top priorities for the Albemarle County Police Department.

In 2016, Albemarle County led in fatal and reportable crashes per population as compared to our peer counties.

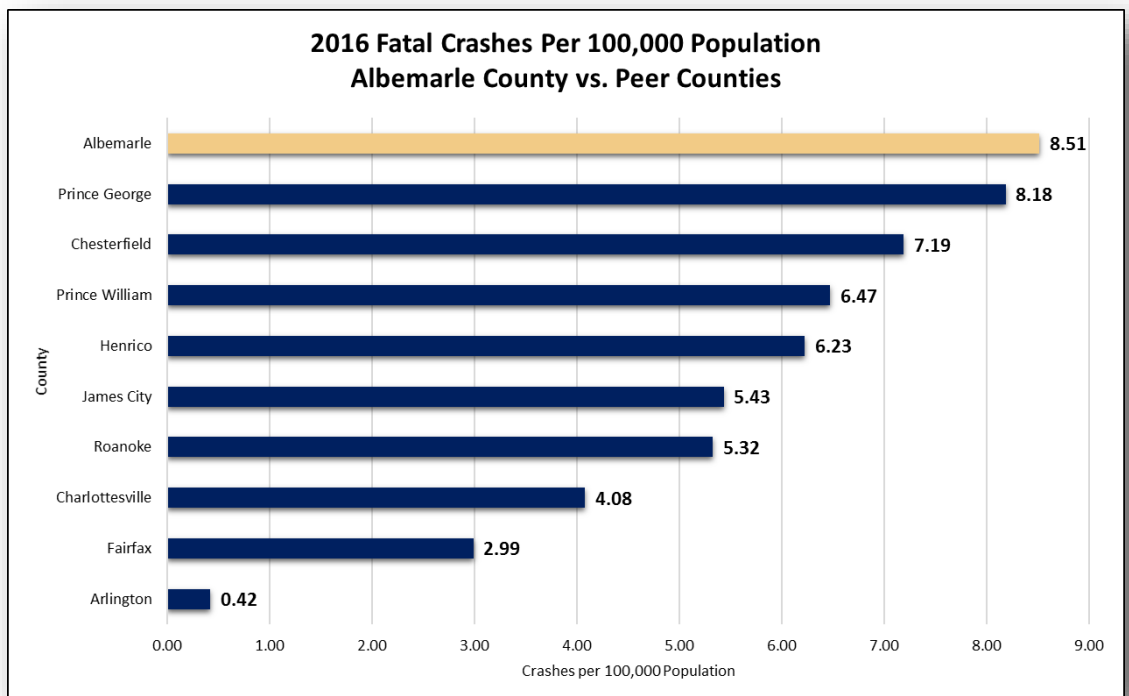
However, there was a drop in fatalities from 2015 by five lives, and we consider that a small victory in the fight against

driver inattention, speeding, and people not buckling up.

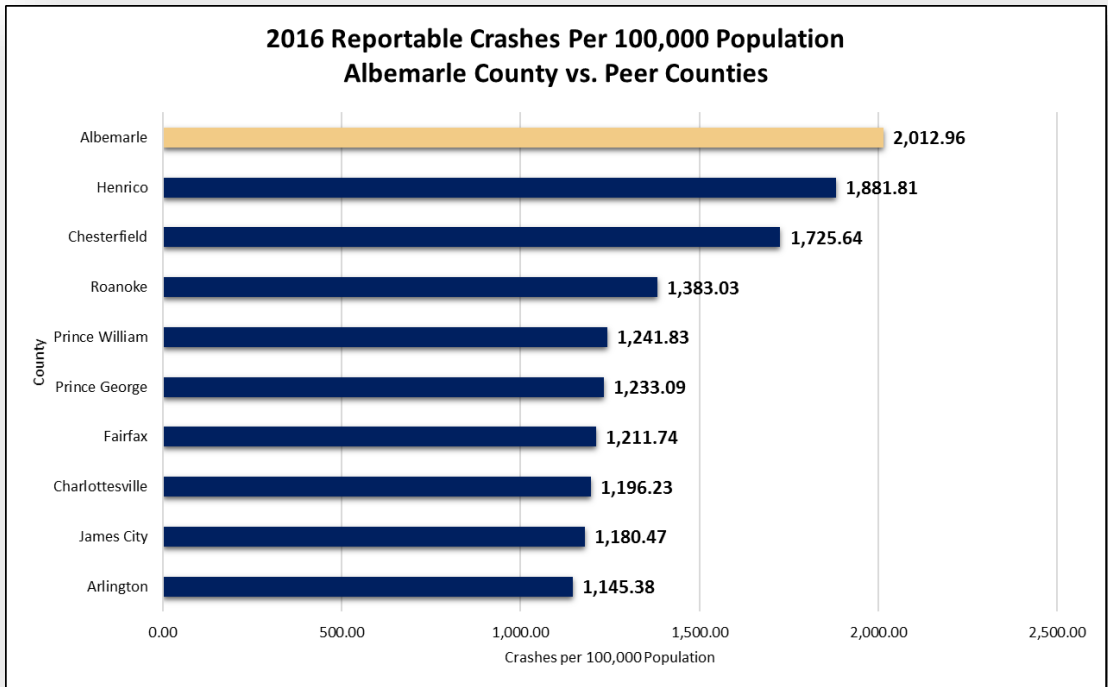
DUI arrests and summonses are also down since 2015.

The Traffic Unit continues to educate drivers through traffic safety initiatives that are funded from the red light camera program.

	CRASHES	FATALITIES	SUMMONSES	DUI
2015	1,996	14	8,219	216
2016	2,128	9	7,153	177



2016 COUNTY TRAFFIC STATISTICS



Albemarle County Police Summonses Issued by Ethnicity - CY 2016

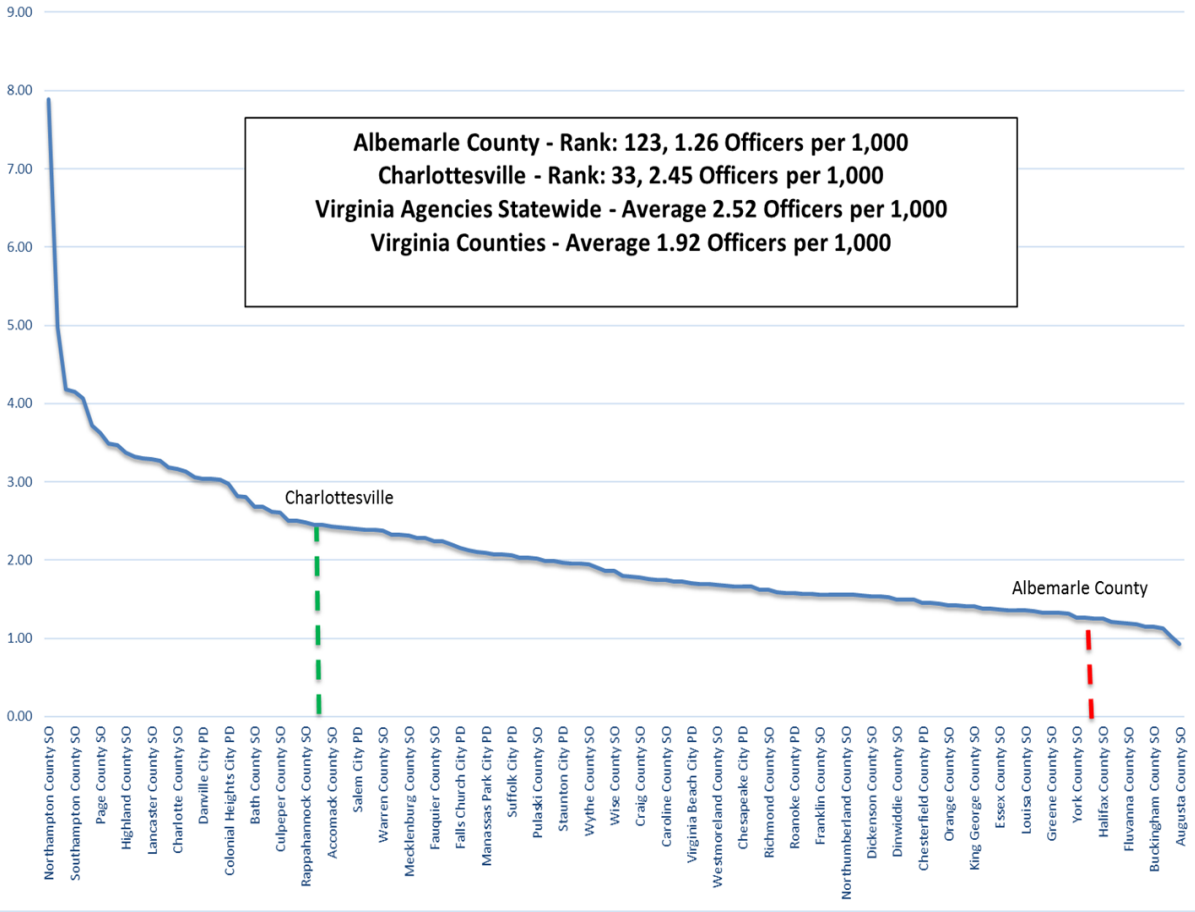
Ethnicity	Num. Summonses	Percentage
Hispanic	405	5.7%
Non-Hispanic	5,307	74.2%
Not Provided	1,441	20.1%
Grand Total	7,153	100.0%

Albemarle County Police Summonses Issued by Race - CY 2016

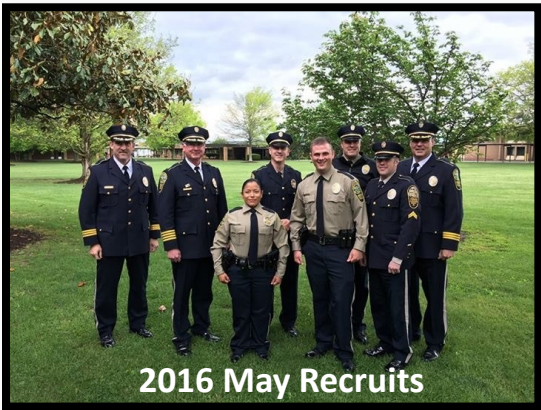
Race	Num. Summonses	Percentage
White	5,684	79.5%
Black	1,271	17.8%
Asian or Pacific Islander	93	1.3%
Unknown Race	88	1.2%
Other	12	0.2%
Hispanic	3	0.0%
American Indian/Alaskan Native	2	0.0%
Grand Total	7,153	100.0%

STAFFING

Number of Sworn Law Enforcement Officers per 1,000 Population Rounded
 (Reflects 2015 Data - Most Current Available at Publication)



Albemarle County - Rank: 123, 1.26 Officers per 1,000
Charlottesville - Rank: 33, 2.45 Officers per 1,000
Virginia Agencies Statewide - Average 2.52 Officers per 1,000
Virginia Counties - Average 1.92 Officers per 1,000



2016 May Recruits



2016 November Recruits

AUXILIARY POLICE PROGRAM



	House Checks	Extra Patrols	Hours	Hourly Labor Value	Total Cost Savings
2016	577	1,768	2,915.50	\$26.09	\$76,065.40
2015	413	648	1,996.10	\$26.09	\$52,078.25

AWARDS FOR SERVICE

The 21st Annual Awards Banquet was held in May of 2016 at the Boar's Head Inn.

The annual banquet formally recognizes the hard work and dedication of people inside and outside the Albemarle County Police Department.

OFFICER OF THE YEAR:

Officer Randy Jamerson

CIVILIAN OF THE YEAR:

Tawnya Bruce

VOLUNTEER OF THE YEAR:

Bob Templeman

COMMUNITY SERVICE AWARD:

Officer Andrew Gluba

Officer Steve Watson

CRIME PREVENTION AWARD:

Ashby Kindler

PROFESSIONALISM AWARD:

Detective Michael Arcoraci

LIFESAVING AWARD:

Sergeant David Wallace

CHIEF'S EAGLE AWARD:

Sergeant Jason Marden

ONE ORGANIZATION AWARD:

Lieutenant Miller Stoddard (Internal)

Louise Wyatt (External)

COLONEL STEVE SELLERS AWARD:

Colonel Steve Sellers



RECOGNITION OF SERVICE TO THE ACPD

THIRTY YEARS:

Captain Pete Mainzer

TWENTY-FIVE YEARS:

Lieutenant Todd Hopwood

Lieutenant Michael Wagner

First Sergeant Dale Johnson

First Sergeant Gary Pistulka

TWENTY YEARS:

Lieutenant Miller Stoddard

First Sergeant Tim Seitz

Sergeant David Wallace

Detective Phil Giles

Detective Jim Hope

FIFTEEN YEARS:

Captain Sean Reeves

First Sergeant Tavis Coffin

Officer David Rhodes

Officer Angela Jamerson

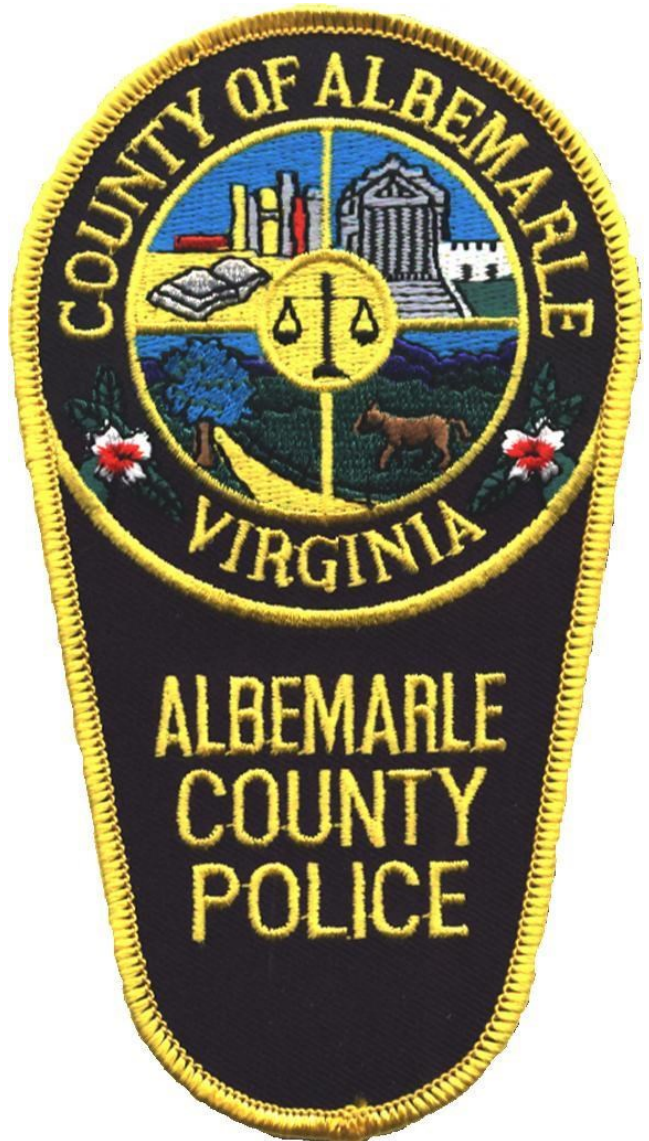
Officer Steve Watson

TEN YEARS:

First Sergeant Benjamin Reeves

Sergeant Jason Marden

Officer Jatanna Rigby



FIVE YEARS:

Officer Katherine Kane

Officer Dominick Zambrotta

Officer Paul Quillon

Officer Bianca Clark

Officer Kyle White

SOCIAL MEDIA OUTREACH

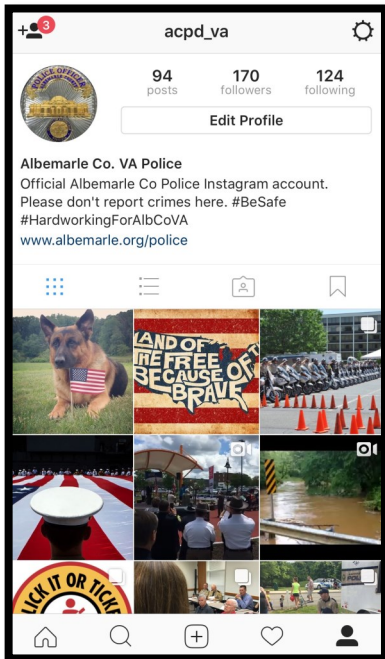
We continue to gain the community's support and trust on social media as we increase the use of these valuable outreach tools to inform and educate about crime, traffic alerts, and important initiatives.

In addition to Facebook and Twitter, Instagram was added to the mix this year. It is our goal to keep this platform positive with captivating pictures and video to creatively inform

and interact with our online community.

We increased our Facebook followers by 2,300 to just over 7,500 followers in the last year and Twitter is approaching 5,000.

On average, we make six posts a day over each platform and those posts reach more than 100,000 people per week.



COMMUNITY FEEDBACK

Cheers and Jeers

63

Complaints
against officers



128

Commendations
for officers

Contact Us

To file commendations or complaints:

434-296-5807

byersd@albemarle.org

askthechief@albemarle.org

www.albemarle.org/police



[/AlbemarleCoVAPolice](https://www.facebook.com/AlbemarleCoVAPolice)



[@ACPD_VA](https://twitter.com/ACPD_VA)



[@acpd_va](https://www.instagram.com/acpd_va)

Emergency: 911

Non-Emergency and to file a police report: 434-977-9041 or www.albemarle.org/police

For information/records: 434-296-5807

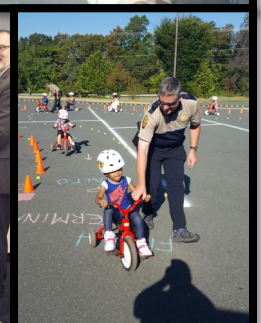
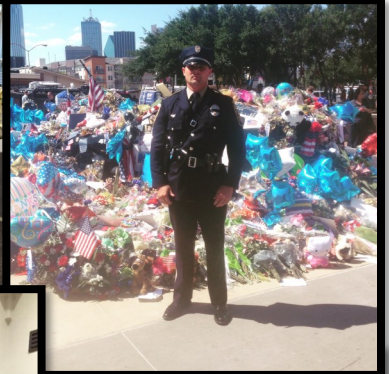
CRIMESTOPPERS: 434-977-4000 or crimestoppers@albemarle.org

2016 IN PICTURES...









ALBEMARLE COUNTY POLICE DEPARTMENT



Minimum Qualifications

- At least 21 years of age at date of appointment
- High school graduate or GED
- Valid Driver's License

Benefits

- Take Home Car
- Work out for 1 hour on duty
- Skills Development Program
- Education Incentive
- Shift Differential

JOIN OUR TEAM TODAY!

Please check the Albemarle County Police Department's website for information on our next entrance exam and the deadlines for the process.

Applications are also available online at www.albemarle.org/police.

ALBEMARLE COUNTY POLICE DEPARTMENT

1600 5th Street Ext.
Charlottesville, VA 22902

www.Albemarle.org/police

Hiring and Recruiting Office
(434) 293-0443

POLICE OFFICER
ALBEMARLE COUNTY



VA