

# Albemarle County Parks & Recreation Crozet Greenways & Parks

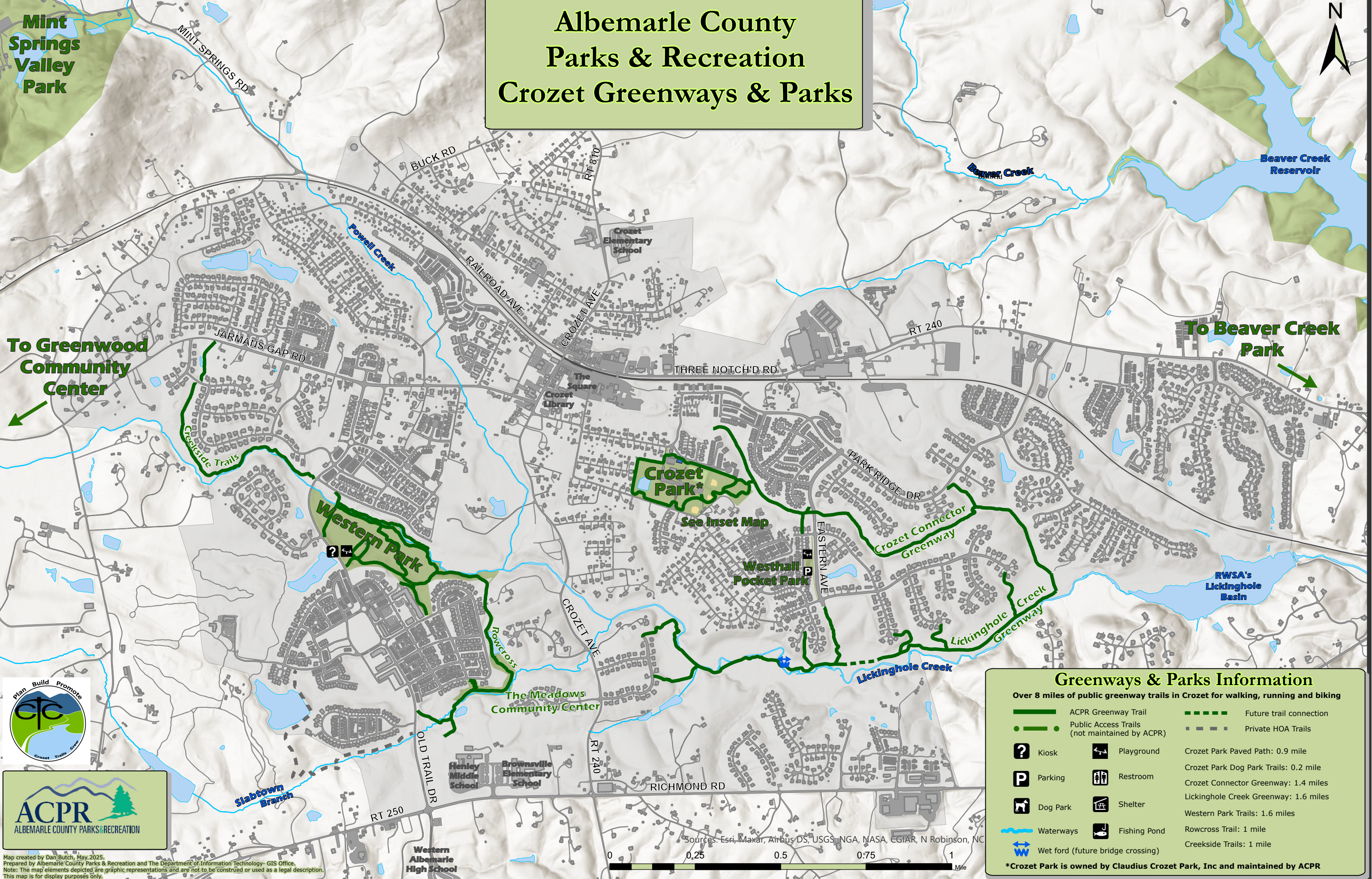


**Mint Springs Valley Park**

**Beaver Creek Reservoir**

**To Greenwood Community Center**

**To Beaver Creek Park**



Map created by Dan Butch, May 2025.  
Prepared by Albemarle County Parks & Recreation and The Department of Information Technology- GIS Office.  
Note: The map elements depicted are graphic representations and are not to be construed or used as a legal description.  
This map is for display purposes only.



## Greenways & Parks Information

Over 8 miles of public greenway trails in Crozet for walking, running and biking

- ACPR Greenway Trail
  - Future trail connection
  - Public Access Trails (not maintained by ACPR)
  - Private HOA Trails
  - Kiosk
  - Playground
  - Parking
  - Restroom
  - Dog Park
  - Shelter
  - Waterways
  - Fishing Pond
  - Wet ford (future bridge crossing)
- Crozet Park Paved Path: 0.9 mile  
 Crozet Park Dog Park Trails: 0.2 mile  
 Crozet Connector Greenway: 1.4 miles  
 Lickinghole Creek Greenway: 1.6 miles  
 Western Park Trails: 1.6 miles  
 Rowcross Trail: 1 mile  
 Creekside Trails: 1 mile

\*Crozet Park is owned by Claudius Crozet Park, Inc and maintained by ACPR