

ANNUAL REPORT

2021 Albemarle County
Police Department



COUNTY OF ALBEMARLE

BOARD OF SUPERVISORS

DONNA P. PRICE

Scottsville District

DIANTHA H. MCKEEL

Jack Jouett District

JIM ANDREWS

Samuel Miller District

NED L. GALLAWAY

Rio District

ANN H. MALLEK

White Hall District

BEA LAPISTO-KIRTLEY

Rivanna District

JEFF RICHARDSON

County Executive

POLICE DEPARTMENT

RON LANTZ

Chief of Police

MAJOR SEAN REEVES

Operations Bureau

Deputy Chief

MAJOR GREG JENKINS

Support Services Bureau

Deputy Chief

TABLE OF CONTENTS

1	Chief's Message Ron Lantz
2	Mission, Values and Strategic Plan
3	Demographics
4	Command Organizational Chart
6	Calls For Service
7	Part One Crime Statistics
8	Arrest Data
9	Quality of Life Concerns
10	Operations Bureau <i>Patrol Division</i>
11	Operations Bureau <i>Operational Support Division</i>
13	Traffic Statistics
17	Support Services Bureau <i>Criminal Investigations Division</i>
26	Support Services Bureau <i>Support & Administrative Division</i>
28	Staffing
29	In The Community
32	Albemarle County Police Foundation
34	Community Feedback
35	Community Policing Report

MESSAGE FROM THE CHIEF...

Just as the year prior, 2021 was monumental and historic. Events around the world and our country impacted the lives of those who live and work in Albemarle County – including the men and women of ACPD. And yet, despite continued pandemics, gas shortages, changing landscapes, and countless other impacts, our staff worked to develop and strengthen our bonds with the community and our commitment to the safety and security of the people of Albemarle County.

The second half of the year saw the re-emergence of community events, a development our officers were ready and excited for. We organized a centralized National Night Out at the Albemarle Square Mall to showcase public safety programs and services. In September, our department partnered with Parks & Recreation, Boys & Girls Club of Scottsville, and the Yancey Community Center to host Community Day in Simpson Park. This outdoor event was a way to celebrate the people and places of Southern Albemarle. In the week leading up to Halloween, our Traffic Unit partnered with the Albemarle County Police Foundation for a trunk or treat event in Crozet. This spooktacular event promoted pedestrian safety with fellow public safety partners.

In addition to community engagement events, our officers focused their attention on promoting safer driving behaviors on our roadways through education and enforcement initiatives. As crime trends fluctuated across the country and here at home, our detectives conducted diligent investigations and continued to maintain a consistently above average clearance rate. Our department responded to over 64,400 calls for service, many initiated by the officers themselves to improve the security of the community they serve.

Lastly, as I pass the torch to the next Chief of Albemarle County Police, Colonel Sean Reeves, I know the department, and its mission, are in good hands. He will continue to move ACPD forward as a modern and professional police department focused on improving the lives of the people we serve.

WHO WE ARE

Mission

Provide for the safety and security of all people, while protecting individual rights and building trust in our diverse communities through quality service.

Goals

1

Strengthen Community Trust, Transparency, Legitimacy, and Accountability

2

Enhance Community Safety

3

Invest In Our People

These goals will guide our agency through 2022. However, as the department evolves, these goals may be amended to address the changing needs of the agency . These updates also ensure the goals rightly align with Albemarle County's overall strategic plan and focus on working as One Organization Committed to Excellence.

WHO WE SERVE

Located in the Piedmont region of Central Virginia, Albemarle County has an area of 726 square miles. The county is a unique blend of rural and urban developments with an estimated population of 112,395*. Known for its association with Thomas Jefferson, Albemarle County is home to Monticello, which can be found on our badges.

In 2012 ACPD implemented a geo-policing model which divides the county into two (2) patrol districts, Jefferson and Blue Ridge, where officers are assigned to specific areas. This allows officers to foster and strengthen relationships within each district's unique communities.

Geo-policing provides officers a greater sense of local concerns, builds stronger ties within the community, and encourages officers to take ownership of the community's concerns within their assigned area. It also instills accountability at all levels of the organization.

Officers are encouraged to develop and implement problem-oriented policing projects within their area and participate in community events. If you have an event and would like an officer to attend, visit our website and complete the Special Activity Request (SAR) form.

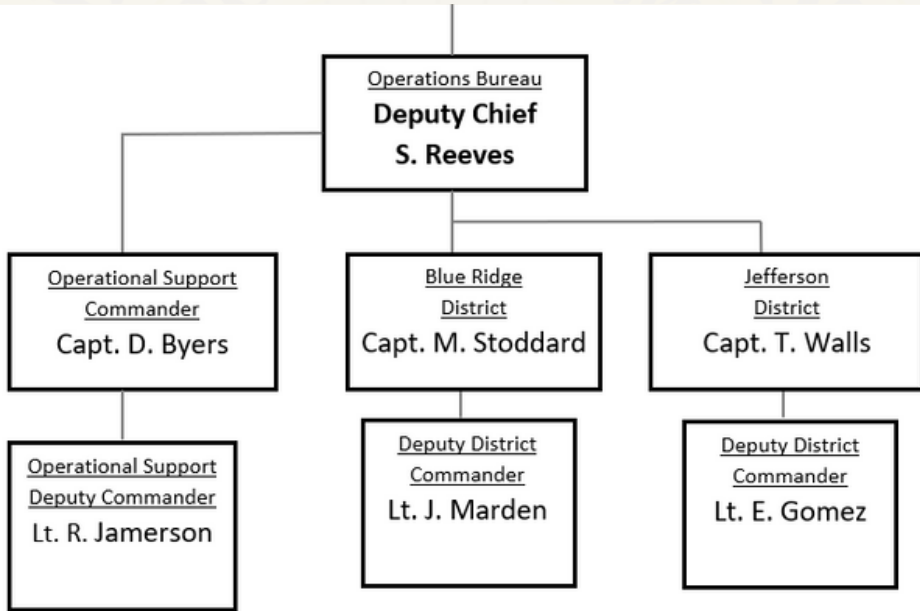
Albemarle County Community Demographics*

*2021 Census Demographics Summary (112,395) Census.gov

Demographic	Community Percentage	Sworn Officers	Male Sworn Officers	Female Sworn Officers
Hispanic or Latino	5.8%	2.8%	2.8%	0%
Black or African American	9.7%	5.5%	5.5%	0%
White	81.8%	91.7%	87.7	12.3%
Asian	5.5%	0%	0%	0%
Native Hawaiian/Pacific Islander	0.1%	0%	0%	0%
American Indian or Alaska Native	0.4%	0%	0%	0%
Multiple Races	2.6%	0%	0%	0%

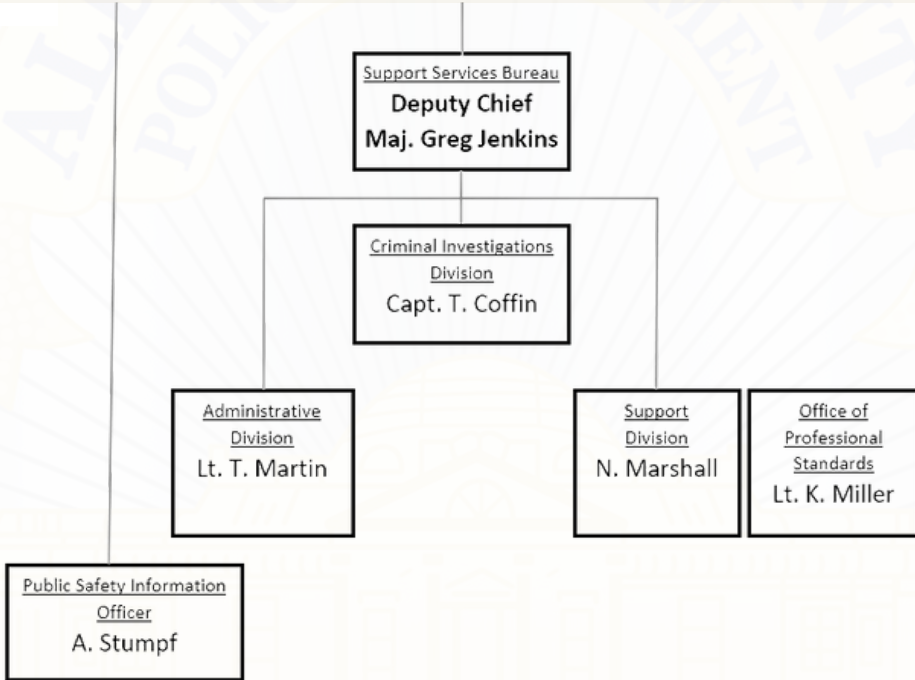
ORGANIZATIONAL CHART

Chief Ron Lantz



ORGANIZATIONAL CHART

Chief Ron Lantz



JOIN OUR TEAM

POLICE SERVICES SPECIALIST

- Operates the VCIN\NCIC computer system
- Assists community members and officers as needed
- Inputs records from previous shift's
- Uses the department radio system
- Runs "Outstanding Arrest Warrant Checks" as appropriate and locates the actual warrant, includes contacting other agencies



CALLS FOR SERVICE

64,400

Total Calls for Service

26,353

Emergency Communications Center Initiated

38,047

Officer Initiated*

**This includes all call activity such as administrative calls and officer-initiated extra patrols.*

Response Time for Priority 1 Calls

A Priority 1 call includes, but is not limited to, murder, rape, aggravated assault, vehicle crash with injury, shots fired, calls involving a weapon, and officer needing assistance. The goal in responding to Priority 1 calls is five (5) minutes or less in urban areas and ten (10) minutes or less in rural areas.

532 Priority 1 calls for service in an urban area

4 MINUTES

Average response time

71% OF CALLS

Attained our goal of responding in under 5 minutes

137 Priority 1 calls for service in an rural area

10:22 MINUTES

Average response time

50% OF CALLS

Attained our goal of responding in under 10 minutes

PART ONE CRIME STATISTICS

Offense	2016	2017	2018	2019	2020	2021	% Change 20-21
Homicide	1	6	2	2	8	0	-100.0%
Forcible Rape	14	27	21	20	21	19	-9.5%
Aggravated Assault	34	37	71	62	57	75	31.6%
Robbery	21	10	20	14	9	7	-22.2%
Total Crimes Against People	70	80	114	98	95	101	6.3%
Breaking & Entering	145	146	123	114	117	103	-12.0%
Stolen Motor Vehicle	61	74	56	49	71	102	43.7%
Larceny	1,070	1,085	1,092	1,117	1,098	1,593	45.1%
Total Property Crimes	1,276	1,305	1,271	1,280	1,286	1,798	39.8%
Total Part 1 Crimes	1,346	1,385	1,385	1,378	1,381	1,899	37.5%

The Federal Bureau of Investigation, Uniform Crime Reporting (UCR) Program divides criminal offenses into two groups, Part One and Part Two crimes. The UCR Program collects data about Part One offenses in order to measure the level and scope of crime occurring throughout the nation.

Each month, ACPD submits information on the number of Part One offenses known to law enforcement; those offenses cleared by arrest or exceptional means; and the age, sex, and race of persons arrested for each of the offenses.

ARREST DATA

ARRESTS BY RACE

Race	ACPD Arrests	Albemarle %	Virginia Arrests	VA %
White	1,231	68.4%	119,899	58.0%
African American	529	29.4%	82,689	40.0%
Asian or Pacific Islander	12	0.7%	1,975	1.0%
American Indian/Alaskan Native	2	<1%	140	<1%
Unknown	27	1.5%	2,019	1.0%
Total	1,801	100.0%	206,722	100.0%

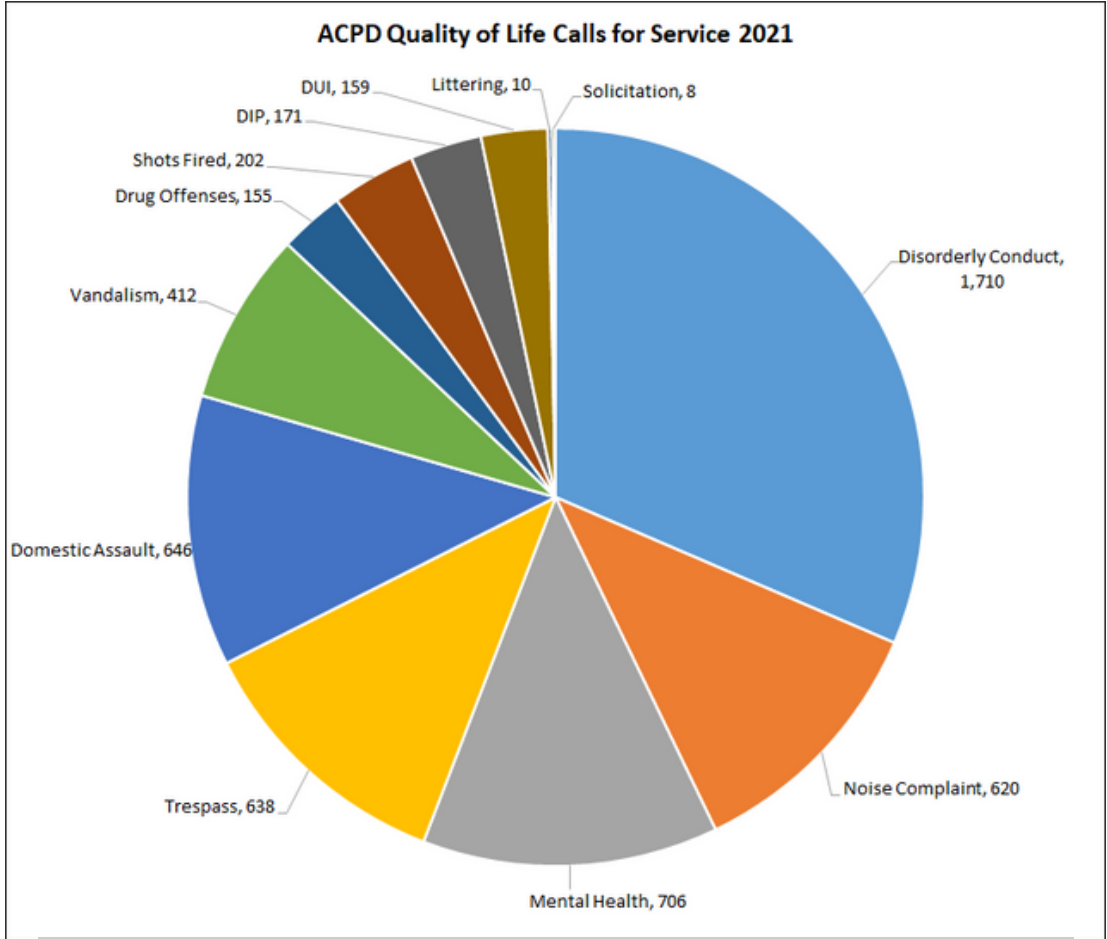
ARRESTS BY ETHNICITY

Ethnicity	Number of Arrests	Percentage	VA %
Not of Hispanic Origin	1,579	87.7%	Unavailable
Hispanic Origin	132	7.3%	Unavailable
Unknown	79	4.4%	Unavailable
Not Listed	11	0.6%	Unavailable
Grand Total	1,801	100.0%	Unavailable

Data shows counts of individual arrest numbers for ACPD arrests by our officers.

The state percent data is from the VSP 2020 Crime in Virginia report, which was the latest version as of this report.

QUALITY OF LIFE CONCERNS

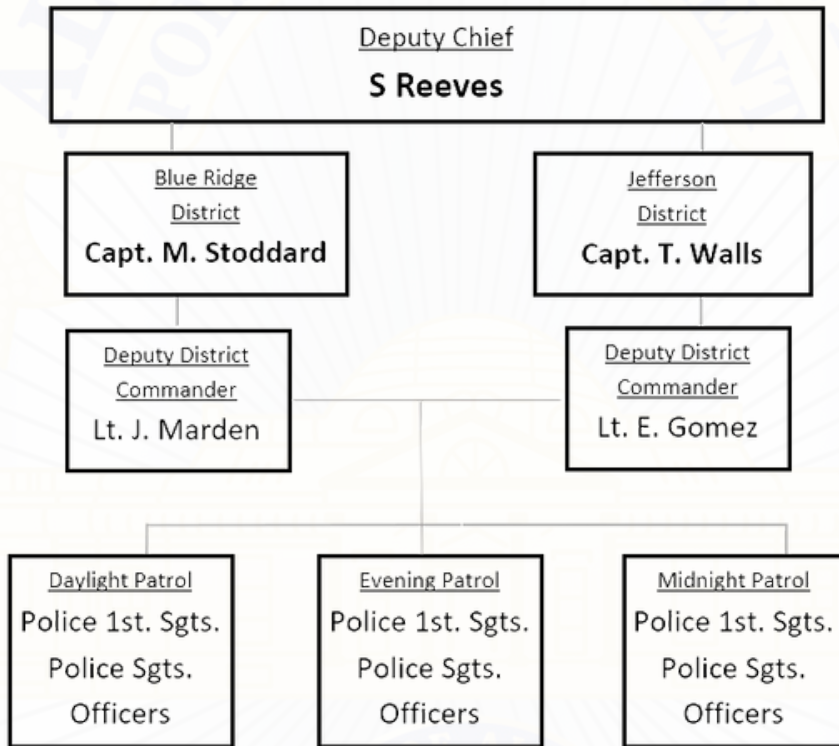


MENTAL HEALTH CALLS FOR SERVICE

Year	Number of CFS	% Change
2016	536	-
2017	575	7.3%
2018	590	2.6%
2019	732	24.1%
2020	634	-13.4%
2021	706	11.4%

OPERATIONS BUREAU

Patrol Division

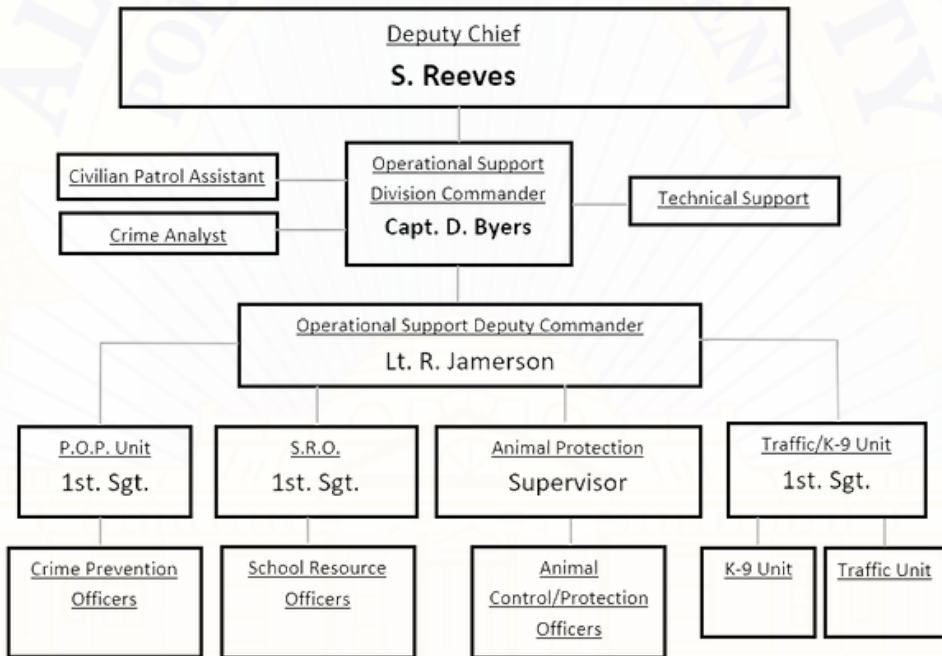


Our Patrol Division is responsible for providing traditional policing services while establishing partnerships that meet the needs of a changing community. Rooted in the principles of community-oriented policing, the Patrol Division works with community members and business owners to identify problems and implement strategies to reduce crime.

More than 70 percent of the department's sworn staff are assigned to this bureau, which is broken down into the Blue Ridge and Jefferson Districts.

OPERATIONS BUREAU

Operational Support Division



The Operational Support Division is housed in the Operations Bureau. They are primarily responsible for traffic safety education and enforcement, as well as K-9 Support, Problem-Oriented Policing, and the Animal Protection Unit. Technical support for day-to-day operations and special events are handled by the Technical Support Officer. False alarm, overtime, and other support programs are overseen through our Civilian Patrol Assistant.

OPERATIONS BUREAU

Operational Support Division

Traffic Unit

Traffic safety and changing driver behavior through education remained top priorities for ACPD in 2021. We continued to conduct commercial motor vehicle inspections throughout Albemarle County, along with increased traffic enforcement efforts through selective enforcement requests and electronic speed indicator devices.

Officers assigned to the **Traffic Unit** not only spend time investigating crashes, looking for drivers that are under the influence of intoxicants, or writing tickets but also attend community meetings, when requested, to speak about traffic concerns in neighborhoods.



OPERATIONS BUREAU

Operational Support Division

TRAFFIC STATISTICS

TRAFFIC SAFETY ENCOUNTERS

	Crashes	Fatal Crashes	Total Fatalities	Traffic Stops	Summonses	DUI Arrests
2018	2163	10	10	13,172	8,509	176
2019	2167	15	16	13,770	8,623	244
2020	1680	14	17	4,271	3,972	166
2021	2013	14	14	4,342	4,640	141

SUMMONS BY RACE

Race	Number of Summonses	Percentage
White	2204	47.5%
African American	769	16.6%
Asian / Pacific Islander	75	1.6%
American Indian / Alaskan Native	1	0.0%
Unknown	108	2.3%
Not Listed	1483	32.0%
Total	4640	100.0%

SUMMONS BY ETHNICITY

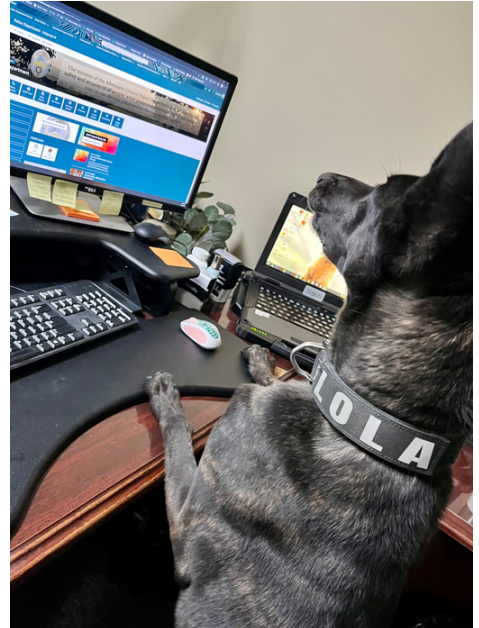
Ethnicity	Number of Summonses	Percentage
Not of Hispanic Origin	1696	36.6%
Hispanic Origin	141	3.0%
Unknown	93	2.0%
Not Listed	2710	58.4%
Total	4640	100.0%

OPERATIONS BUREAU

Operational Support Division

K-9 Unit

Our **K9 Unit** is made up of six (6) handlers/officers and six (6) canines. Each team has specific functions, but overall they prevent and respond to crimes, perform investigations, locate and arrest perpetrators, and detect explosives. In the event that a piece of evidence needs to be found, a canine officer may work with the dog to search for it.



December 2021 regrettably saw the passing of K9 Sultan. K9 Sultan and his handler, Officer Sheridan, worked diligently to uphold the organization's core values and will be missed.



OPERATIONS BUREAU

Operational Support Division

Problem-Oriented Policing

The **Problem-Oriented Policing (P.O.P.) Unit** is tasked with addressing specific ongoing quality of life issues in the county, focusing on community engagement and repeat calls for service. The P.O.P. Unit analyzes crime trends and problems in the county and generates solutions for these issues. A key component of P.O.P. is evaluating the effectiveness of these solutions through data-driven measures.



National Night Out August 2021

OPERATIONS BUREAU

Operational Support Division

Auxiliary Officers and Animal Protection Unit

	House Checks	Extra Patrol	Hours	Hourly Labor Value	Total Cost Savings
2018	405	2,283	1,930.0	\$26.75	\$51,627.50
2019	288	2,721	1,650.5	\$27.50	\$45,389.00
2020	63	936	702.0	\$27.20	\$19,094.00
2021	89	1,949	1,358.5	\$27.00	\$36,679.50

Our **Auxiliary Police Officers** provide valuable services to our community members every day. You can find them directing traffic, checking houses while residents are away, and helping out wherever needed—all as volunteers!

Auxiliary Officers receive initial training through the same Virginia Department of Criminal Justice Services program and complete a similar field training program their full-time peers. They also receive similar yearly in-service training.

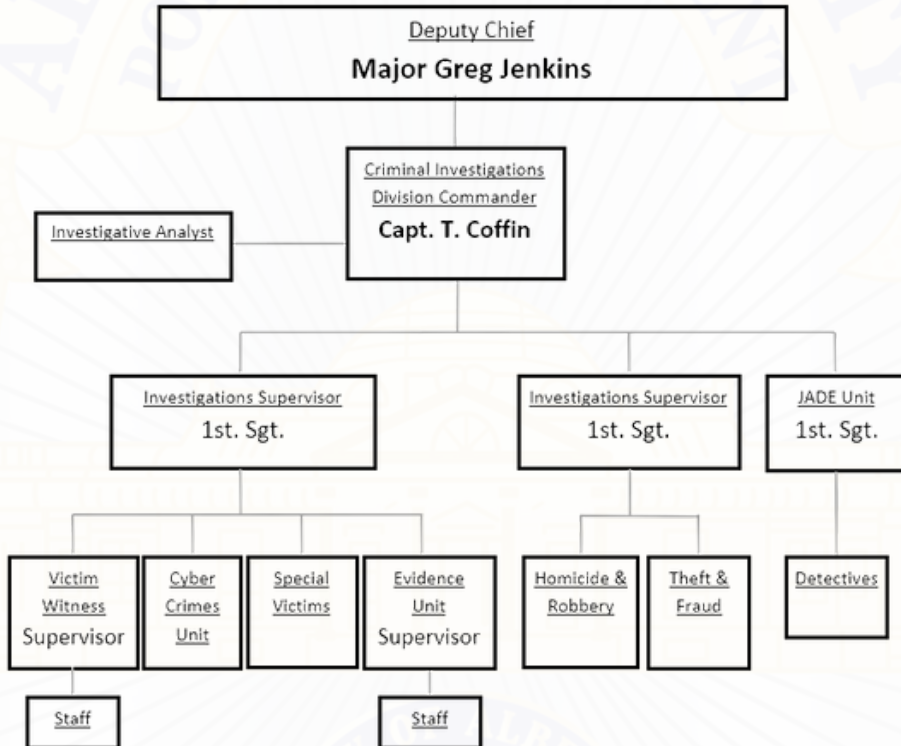
We can't thank these officers enough for their valuable services and dedication! If you would like to learn more about becoming an Auxiliary Officer, contact our Special Operations Division at 434-296-5807.



The **Animal Protection Unit** encourages responsible pet ownership and the humane treatment of animals through education, as well as enforcement of state laws and county ordinances related to the health and safety of domestic animals. The unit is staffed with three (3) sworn animal protection officers and one (1) civilian animal control officer. Members of the unit work collaboratively, investigating criminal offenses like animal cruelty and assisting the local health department on other related matters.

SUPPORT SERVICES BUREAU

Criminal Investigations Division (C.I.D.)



Homicide, Robbery, Theft, Fraud, Cyber Crime, Jefferson Area Drug Enforcement (J.A.D.E.), and Special Victims detectives are all a part of C.I.D. Our Victim/Witness team provides support to victims of crimes, while the Evidence Unit is responsible for maintaining the integrity of the chain of custody for all evidence and property that is submitted by officers and detectives.

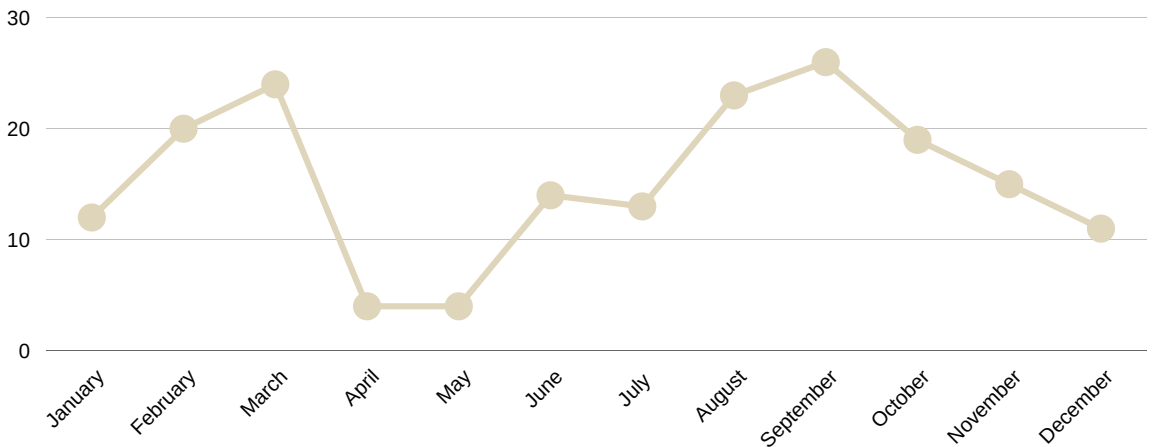
SUPPORT SERVICES BUREAU

Criminal Investigations Division

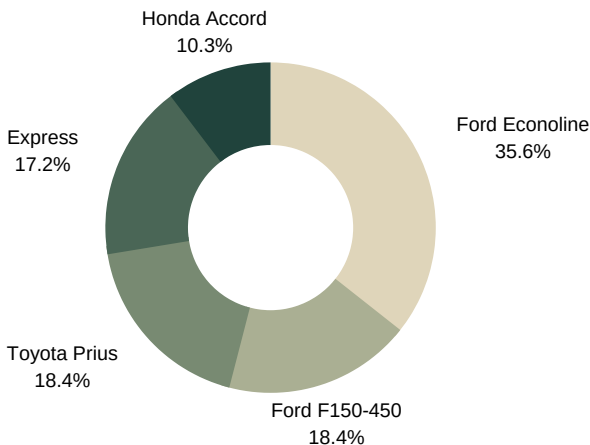
Catalytic Converter Thefts

In 2021, the theft of catalytic converters became a nationwide issue, and Albemarle County was no exception. Through diligent and thorough investigations, ACPD detectives actively investigated 152 cases. Several individuals were suspected to be the cause of a few series of thefts. Once those individuals were arrested, our area saw a decrease in thefts.

Reported Catalytic Converter Thefts by Month



Catalytic Converter Theft by Vehicles Most Targeted



BE ALERT
ALBEMARLE



In addition to actively investigating these thefts, CID detectives shared theft prevention tips through media engagements, social media posts, and community interactions.

SUPPORT SERVICES BUREAU

Criminal Investigations Division

Part One Crime Investigated by C.I.D.

NEW

The FBI has transitioned from UCR (Uniform Crime Reporting) to NIBRS (National Incident Based Reporting System) data collection. In previous annual reports, we have provided a comparison between our clearance rates and the national clearance rates for UCR Part One crimes. To continue to provide a comparison to the national average, we will begin presenting the clearance rates for NIBRS Group A crimes, which are divided into three groups: Crimes Against Persons, Crimes Against Property, and Crimes Against Society. For more information on NIBRS and Group A crimes, you can visit the FBI website at www.fbi.gov/services/cjis/ucr/nibrs.

In 2021, the **Criminal Investigations Division** was assigned 602 Group A crime counts, a 6% increase compared to 2020. The offenses marked with an asterisk (*) indicate charges that were not assigned to the Criminal Investigations Division in 2021.

GROUP A CRIME INVESTIGATED BY C.I.D.

Crimes Against Persons

Group A Offenses	2021 ACPD CID Clearance Rate	2020 National Average Clearance Rate
Assault	53%	44%
Homicide	*	50%
Human Trafficking	*	33%
Kidnapping/Abduction	50%	52%
Sex Offenses	55%	24%

SUPPORT SERVICES BUREAU

Criminal Investigations Division

Part One Crime Investigated by C.I.D.

GROUP B CRIME INVESTIGATED BY C.I.D.

Crimes Against Property

Group B Offense	2021 ACPD CID Clearance Rate	2020 National Average Clearance Rate
Arson	*	22%
Bribery	*	62%
Burglary/Breaking & Entering	39%	13%
Counterfeiting/Forgery	56%	18%
Destruction/Damage/Vandalism	19%	16%
Embezzlement	57%	31%
Extortion/Blackmail	25%	5%
Fraud	39%	9%
Larceny/Theft	29%	15%
Motor Vehicle Theft	40%	12%
Robbery	50%	24%
Stolen Property	*	63%

SUPPORT SERVICES BUREAU

Criminal Investigations Division

Part One Crime Investigated by C.I.D.

GROUP C CRIME INVESTIGATED BY C.I.D.

Crimes Against Society

Group C Offense	2021 ACPD CID Clearance Rate	2020 National Average Clearance Rate
Animal Cruelty	*	23%
Drug/Narcotic	43%	76%
Gambling	*	27%
Pornography/Obscene Material	52%	20%
Prostitution	*	65%
Weapon Law Violations	38%	62%

Motor vehicle theft in the United States increased nearly 12% from 2019 to 2020*. This is the largest increase in over a decade. Albemarle County has also experienced an increase in reported motor vehicle thefts, with many of these crimes being investigated by C.I.D. Albemarle County continues to have a motor vehicle theft clearance rate above the national average, with our 2021 clearance rate more than 3 times higher than 2020's national clearance rate.

Additionally, C.I.D.'s clearance rate in 2021 exceeds the most current national average for most of the Group A crimes including sex offenses, robberies, assaults, burglaries, and larcenies.

*www.iii.org/fact-statistic/facts-statistics-auto-theft#Motor%20Vehicle%20Theft,%202011-2020

SUPPORT SERVICES BUREAU

Criminal Investigations Division

Jefferson Area Drug Enforcement (JADE)

SEIZED DRUGS BY YEAR

Drug Type	2017	2018	2019	2020	2021
Marijuana	102.4 lbs	2,383.0 g	9,768.0 g	2,075.0 g	93 g
Cocaine (Powder)	1,393.3 g	403.0 g	929.0 g	94.9 g	1,111.4 g
Cocaine (Crack)	103.4 g	96.0 g	246.0 g	0.8 g	6.6 g
Methamphetamine	243.2 g	5,015.0 g	1,528.0 g	9,762.9 g	8,198.1 g
Heroin / Fentanyl	97.1 g	35.0 g	84.0 g	5.5 g	83.5 g
Ecstasy / Hallucinogens	146.0 g	167.0 g	57.8 g	9.0 g	24.0 g

In 2021, **Jefferson Area Drug Enforcement (JADE)** reported an increase in amounts seized in the following illicit drugs: powder cocaine +1,071%; crack cocaine +725%; heroin/fentanyl +1,418%; and ecstasy/hallucinogens +167%. The amounts of methamphetamine and marijuana seized decreased by 16% and 96%, respectively. Overall, the total value of drugs seized in 2021 decreased 29% to \$264,565.

Additional items seized during the course of these investigations included 10 weapons and \$94,627 in U.S. currency.

There were 5 interdiction operations conducted, 3 search warrants issued, and 27 controlled purchases made, resulting in 25 felony arrests with 26 charges pending.

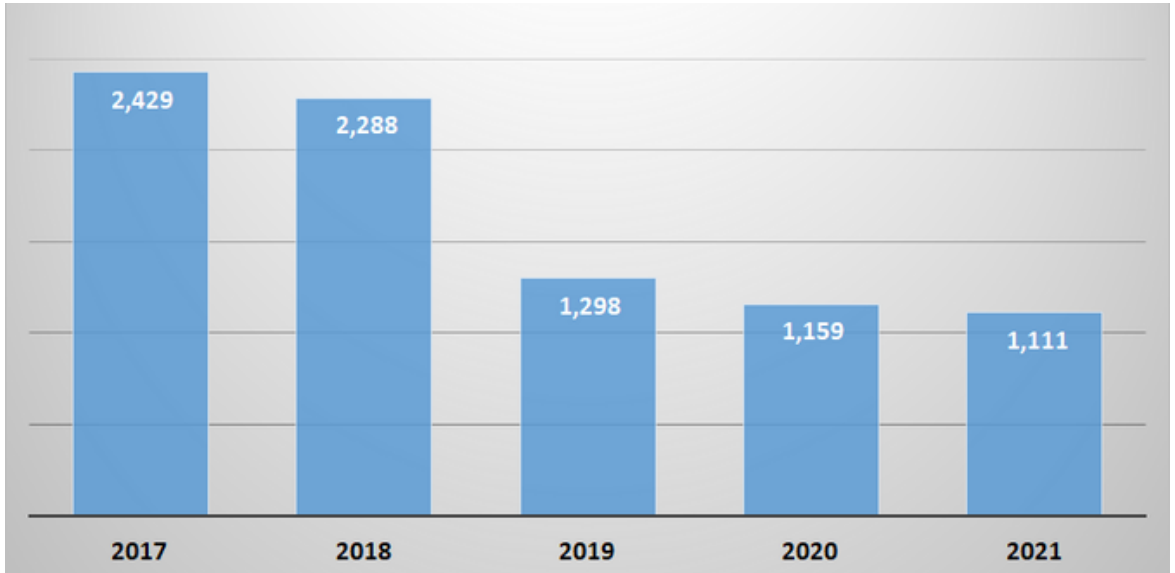
2021 JADE highlights include a controlled delivery that resulted in the confiscation of \$70,000 worth of cocaine and methamphetamine, and the seizure of a stolen gun that was used in a shooting in Richmond.

SUPPORT SERVICES BUREAU

Criminal Investigations Division

Evidence

NUMBER OF NEW EVIDENTIARY ITEMS



In 2021, the Evidence Unit saw a 4% decrease in the number of new items from 2020. Currently the unit houses over 13,000 pieces of evidence.



SUPPORT SERVICES BUREAU

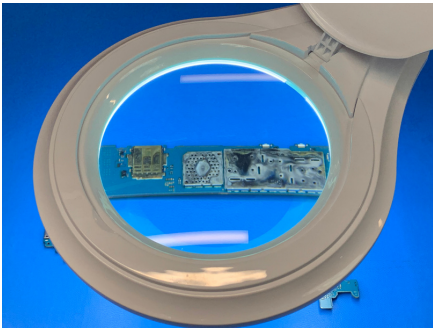
Criminal Investigations Division

Cybercrimes Lab

In the fall of 2019, work began on our Cybercrimes Lab. This lab provides investigators with a state-of-the-art workspace to conduct forensic analysis on electronics. By bringing this lab under the Albemarle County Police Department's (ACPD) roof, computer examinations that once took months to complete can now be accomplished in as little as a few days.

Offenses that are typically investigated by our Cybercrimes Lab increased 34% in 2021, compared to the three year average. These offenses include serious charges such as child pornography, bomb threats, harassment by computer, and computer fraud.

The technology and expertise of ACPD staff assigned to cybercrimes allows the investigation of not only computer-generated criminal activity occurring within Albemarle County, but on behalf of outside agencies as well. In 2021, ACPD provided assistance in 15 cases with cyber-related offenses that were generated from outside jurisdictions, including neighboring localities, out-of-state, and federal agencies.



SUPPORT SERVICES BUREAU

Criminal Investigations Division

Victim/Witness Unit



Susan Painter & Theo
Victim/Witness Coordinator
&
Courthouse Pup



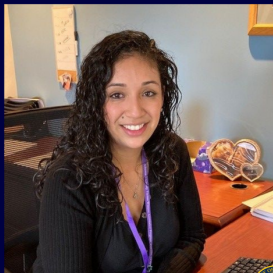
In 2021, Victim/Witness advocates provided support to 1,725 victims of a variety of crimes, about 12% less than in 2020. The unit helped 7 victims file claims with the Virginia Victims Fund, with nearly \$13,000 awarded through these claims.

The Victim/Witness Unit has also partnered with the Commonwealth Attorney's Office and other community partners to begin utilizing restorative justice practices in some of their cases, when applicable.

Sadly, we had to say goodbye to our Courthouse Dog, Theo, who passed away in June 2021. He offered a calm presence and brought comfort to countless victims and witnesses during his seven years working with the Albemarle County criminal justice system. He is deeply missed.

Contact Us

434-296-5830



Jennifer Hernandez
Spanish Speaking Advocate



Sandra Abbott
Victim/Witness Assistant Coordinator

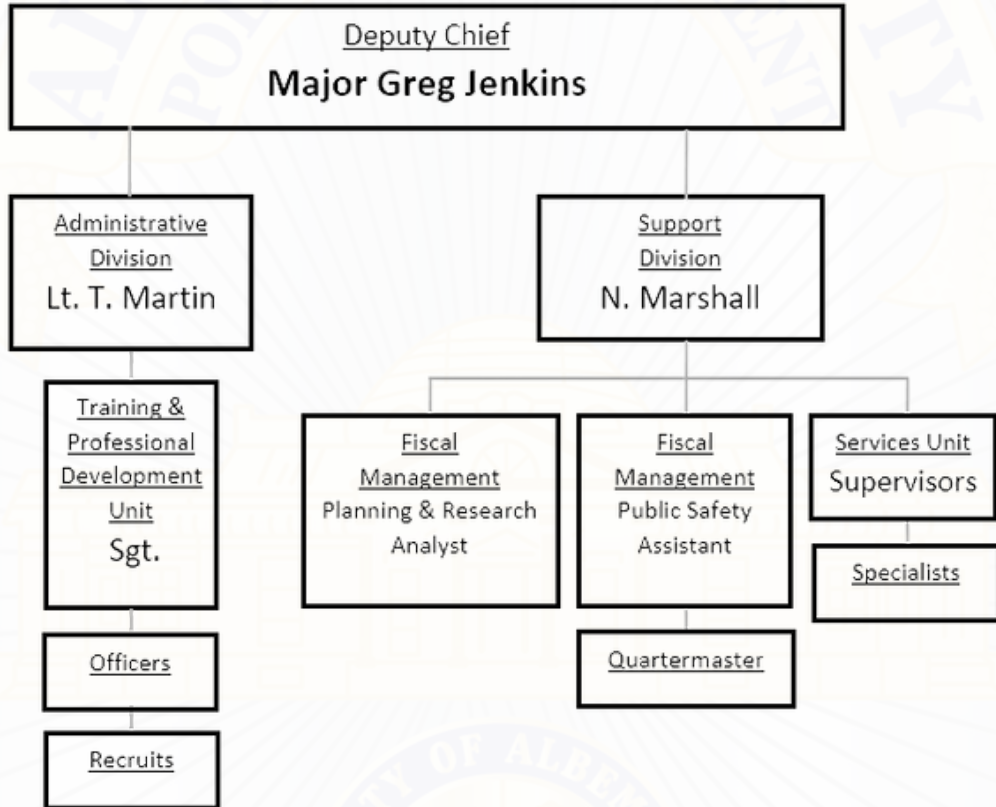


Deborah Graham
Victim Witness Advocate



SUPPORT SERVICES BUREAU

Support & Administrative Division



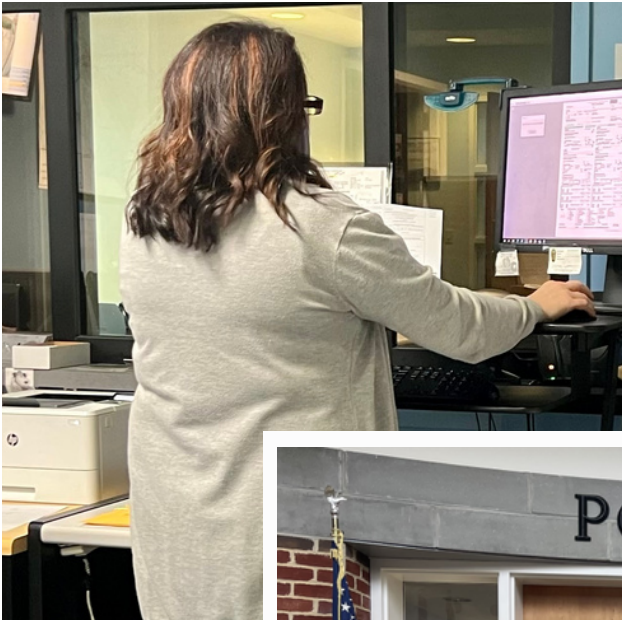
The Administrative and Support Divisions provide services to both internal and external customers. Tasks ranging from issuing uniforms and equipment, to assisting citizens in the front lobby are handled by the Support Division. Research and grant funding, as well as accreditation for the agency is handled by our Planning & Research Analyst. The Training and Professional Development Unit maintains the certification of personnel through interdepartmental and external training while working to recruit new officers and civilian staff.

SUPPORT SERVICES BUREAU

Support Division

Services & Fiscal Management Units

Our Services and Fiscal Management units provide services to both internal and external customers. Tasks ranging from issuing uniforms and equipment, employee on-boarding/off-boarding, developing the annual budget to assisting citizens in the front lobby are handled by this division.



SUPPORT SERVICES BUREAU

Administrative Division

Staffing

Number of Sworn Officers Per 1,000 Community Members	
2021	1.33/1,000
2020	1.33/1,000
2019	1.38/1,000
2018	1.27/1,000
2017	1.34/1,000
2016	1.21/1,000



As a part of Albemarle County's commitment to growth, the adopted Comprehensive Plan of 2015 established a service standard of 1.5 sworn police officers per 1,000 community members. At the time, there were 154 sworn police officers with an estimated population of 103,707. As of 2021, ACPD had 1.33 officers per 1,000 community members.



May 2021 Recruits



November 2021 Recruits



OUT AND ABOUT IN THE COMMUNITY

2021 saw the return of some in-person community events, and we were there for them!



Pedestrian Safety Trunk-or-Treat in Crozet



Community Day at Simpson Park



OUT AND ABOUT IN THE COMMUNITY

2021 saw the return of some in-person community events, and we were there for them!



National Prescription Drug Take Back Day



OUT AND ABOUT IN THE COMMUNITY

2021 saw the return of some in-person community events, and we were there for them!



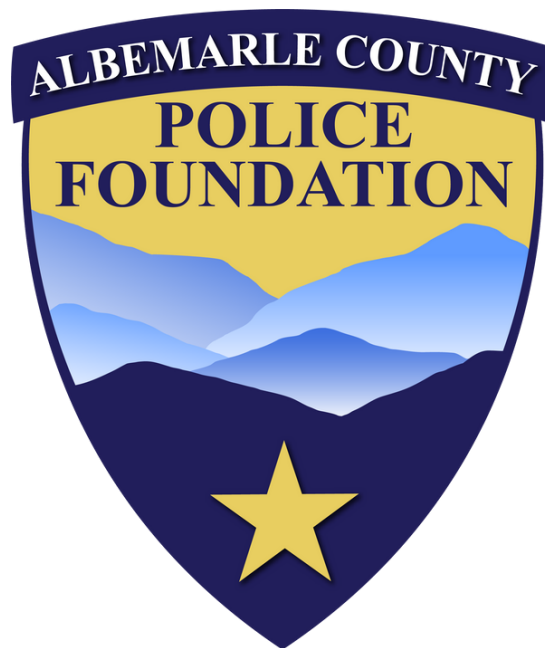
Retirement Ceremony For Chief Lantz

CPR/AED/First Aid Training

SUPPORTING THOSE WHO PROTECT US

Mission

To promote public safety by supporting the Police Department in its efforts to be a professional, highly educated and trained organization, equipped to prevent crime and enhance the overall safety of our community.



What We Do

- Educational Scholarships
- Housing Assistance Program
- Training & Equipment
- Community Outreach
- Tuition Assistance

Events

- Awards Banquet
- Putt -Putt With The Police
- Clays For Cops
- Guardians' Gauntlet
- Police Week Celebrations

Facebook: @acpdfoundation
albemarlecountypolicefoundation.com

#BeACPD

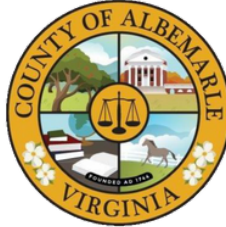
Learn More



COMMUNITY FEEDBACK

34

COMPLAINTS OUT
OF 64,400 CALLS
FOR SERVICE



100

COMMUNITY
COMMENDATIONS
OF OFFICERS

ASSAULTS ON OFFICERS

	Assaults On ACPD Officers	Resulted In Injury To ACPD Officer
2017	7	Not Reported
2018	6	6
2019	9	5
2020	9	3
2021	7	5

Response to Resisting Arrest and Use of Force

In 2021, Albemarle County Police Officers made 1,801 arrests. On 7 occasions, officers were required to use force to overcome resistance or threat.

The most common response to resistance was physical or hands on, with no founded excessive force cases in 2021.

TO FILE COMMENDATIONS OR COMPLAINTS:

434-296-5807

WOYCIKC@ALBEMARLE.ORG

IN-PERSON AT ACPD

WWW.ALBEMARLE.ORG/POLICE

COMMUNITY POLICING REPORT

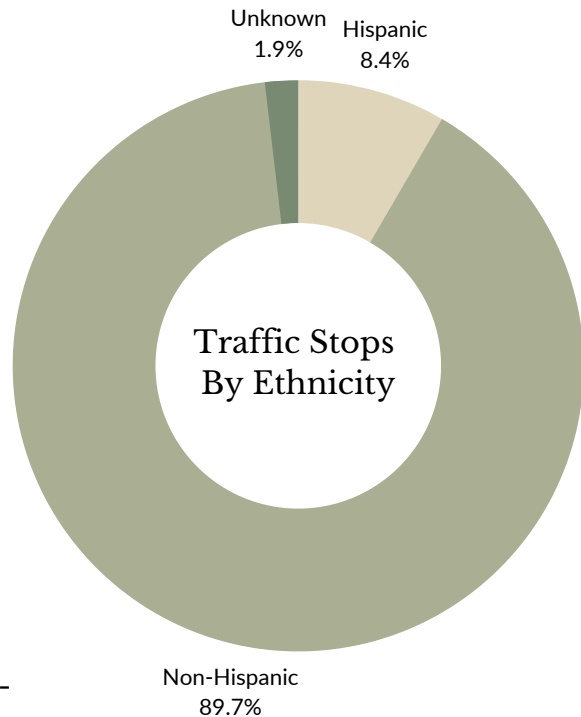
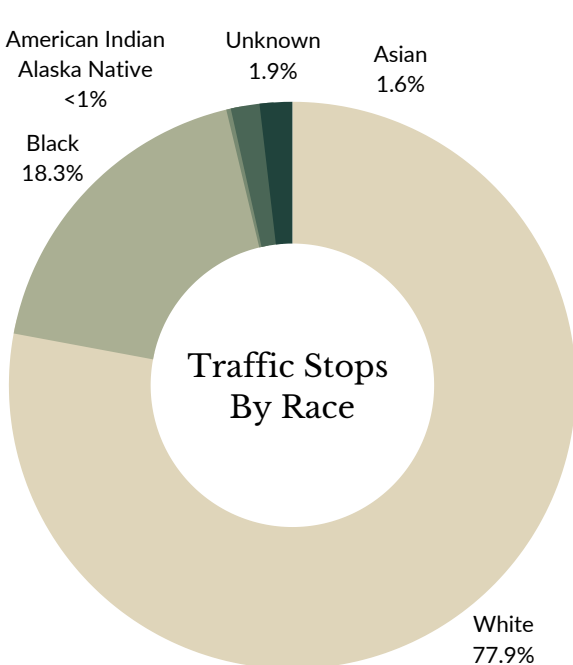
The Virginia Community Policing Act requires law enforcement agencies to collect demographic information during traffic and investigatory stops. This data is submitted to a statewide Community Policing Reporting Database maintained by the Virginia State Police. The database contains all records of investigatory motor vehicle stops, all stop-and-frisks of a person based on reasonable suspicion, and other investigatory detentions that do not result in an arrest or the issuance of a summons. This statewide data is analyzed to determine the prevalence of bias-based profiling.

For more information, visit www.albemarle.org/police.

NEW

Top 5 Violation Categories By Count & Percentage

Speeding	1730	34%
General/Miscellaneous	1000	20%
Titling/Registration/Licensure	692	14%
Motor Vehicle & Equipment Safety	499	10%
Reckless Driving	354	7%





Albemarle County Police Department
1600 5th Street, Suite D
Charlottesville, VA 22902
Headquarters: 434-296-5807
CrimeStoppers: 434-977-4000
www.albemarle.org/police
@ACPD_VA